



**MANABI**  
JAPANESE LANGUAGE INSTITUTE

April 2020 - March 2021

# Маш олон янзын тэтгэлэгийн системтэй

豊富な奨学金制度 Enriched Scholarship

# Их дээд сургуульд дэвшин суралцахад хангалттай

# ДЭМЖЛЭГ ҮЗҮҮЛНЭ

充実の大学進学指導 University Admission Guide



**Tokyo** Campus  
**Nagano** Campus

[www.manabi.co.jp](http://www.manabi.co.jp) ►



# NAGANO Campus

Learning in a city with abundant nature, while being enjoying the city's full functionality

Nagano Campus is located in the middle of Nagano Prefecture.

Nagano Campus has a lot of natural resources like Cherry blossom in Spring, maple leaves in Autumn and snow in Winter. You can enjoy a lot of activities here which you can not experience in the capital city of Japan, like mountain climbing, ski sports and a lot of hot springs. There also a lot of activities and events which you can participate and interact with Japanese people. It is only 72 minutes away from Tokyo thru bullet train, cost of living is reasonable and everyone can live securely during their student life.

(School Principal, Hatada Takashi)



An environment where you can concentrate on your studies, and an advantage for low-cost of living.

## A city with full functionality

Within just 10 minutes from your house you will find places that are necessary for living such as large supermarkets, schools, hospitals and convenience stores. It is the best place for concentrating on your studies since the city itself is peaceful and beautiful.

## Zero transportation fee, Cheap room rental!

There will be no transportation cost since you'll be able to move around the city using your bicycle. And the most important thing is that the cost of living is cheap.

Compared to apartment rentals in big cities, the rent here is less than half the amount.



Ms. Nguyen Thi Tu  
Vietnam

## 1 month income

Part-time job salary	+80,000
Rent	-17,000
Utility fee	-7,000
Food	-15,000
Phone bill	-7,000
Others	-10,000
<b>Total</b>	<b>+24,000</b>



# TOKYO Campus

Learn in a city where modern and traditional culture blends

Tokyo Campus is located in Tokyo's Ryogoku. Ryogoku is only 10 minutes away from Tokyo Station and 20 minutes away from Shinjuku Station. It is just a 5-minute train ride to the world's famous Akihabara. Near Ryogoku is Asakusa, Ryogoku Kokugikan famous for Sumo Wrestling, and Edo-Tokyo Museum. It is just a walk-away from Tokyo Sky tree which was built in 2012. (School Principal, Tokoku Shinichiro)



If you want to be touched by cutting-edge culture and lifestyle, then Tokyo is best for you.

## 1 month income

Part-time job salary	+112,000
Rent	-47,000
Utility fee	-5,000
Food	-25,000
Phone bill	-7,000
Others	-20,000
<b>Total</b>	<b>+8,000</b>

## A blend of traditional and modern town

Tokyo is a big city. Ryogoku where the school is located have traditional street landscapes and where you can feel the tradition of Japan. There are nearly 20 nationalities where you will be able to touch a world you do not know when you talk with them.

## To my favorite Akihabara

I often go to Akihabara after school. It is only 5 minutes and 2 stations away by train from Ryogoku. It is really a convenient town since you can immediately go to other places by train.



Mr. Pang Wing Yiu  
Chinese (Honkong)

# A program that responds to students needs

## Long-term study abroad Graduate school entry program

A program for students with bachelors degree. General entrance examination system means to develop the student's Japanese language and expressiveness in specialized skills in order pass a different graduate school entrance examination.

【Enrollment period : April, July, October, January】

## Long-term study abroad Famous university admission program

A program aimed for famous university admission. In parallel with learning the Japanese language the students are also able to study EJU subject and take interview exam practice.

【Enrollment period : April, July, October, January】

## Long-term study abroad Fine arts university admission program

Special preparations are needed to enter in a art university. In this program, you will be able to study in an arts university preparatory school while studying Japanese.

【Enrollment period : April, July, October, January】

## Short-term study Unrestricted study period program

You can decide on when to enroll and span of time that you will study the apply. Since you can decide on from 2 weeks to 3 months study, you can use your long time vacation from your country and experience living and studying in Japan.

【Enrollment period: 2 weeks ~ 3 months. Enroll at anytime. However, depending your Japanese level there are time that admission won't be possible.】

## Short-term study Summer Program

Every July in a period of 2 weeks or 1 month you will be able to enjoy festival participation, nature and culture experience while studying Japanese.

【Only in July. For 2 weeks or 1 month】

# Enriched scholarship system

Total

1

about **3,000,000** JPY

## Famous University admission scholarships

500.000 JPY

The University of Tokyo

200.000 JPY

Hitotsubashi University  
Tokyo Institute of Technology  
University of Tsukuba  
Tohoku University  
Hokkaido University  
Tokyo University of Foreign Studies

Kyushu University  
Chiba University  
Waseda University  
Keio University  
Sophia University

300.000 JPY

Kyoto University

Osaka University

Nagoya University

100.000 JPY

Saitama University  
Shinshu University  
Meiji University  
Hosei University  
Chuo University

Rikkyo University  
Aoyamagakuin University  
Tokyo University of Science  
Gakushuin University  
Yokohama National University



2

## MANABI's Special Award Scholarship

Total over 1.900.000 JPY

※Nagano and Tokyo Campus total

- Must be enrolled in MANABI for 1 year and more
- Recommended by the Admission office and Education department.
- Must have good attendance rate and good grades
- Determined by selection meetings
- 100% attendance rate
- 100% homework submission



3

## Monbukagakusho Honors Scholarship for Privately-Financed International Students

1 Year, Total of 360.000 JPY

※30.000 JPY per month × 12months

- A very good grades and attendance rate
  - Applicant for further education
  - Recommendation from school
- ※5 to 6 students per year



# University/Vocational entry preparation support

University entry in Japan starts on April. It is when the cherry blossoms bloom.

MANABI utilizes the lecturers experience and data to support students on their university and vocational entry preparations.

**1** Thorough guidance starts from “What am I going to study?”

It is important to fully understand your future goals and dreams, how to reach it and then decide on the course that you will take. We carefully listen on what students voices and guide them.

**2** A man-to-man guidance that matches the students individually

The teachers supports the students until they pass. Since every students has different goals we thoroughly guide them that matches their goals .

**3** Experienced faculty and staff w/ strong back-up

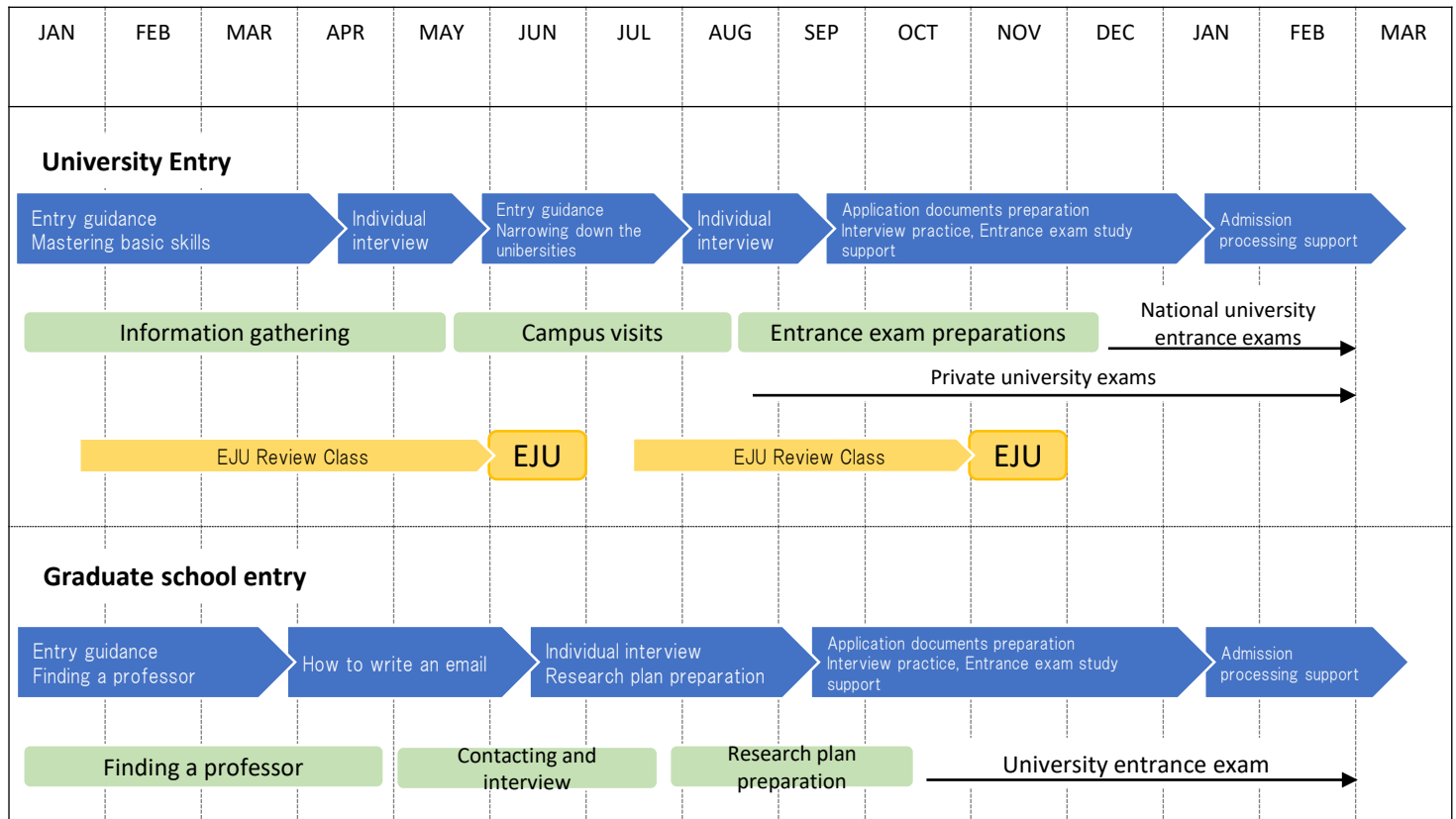
Even for first timers please be at ease since our university/vocational entry preparation in-charge is very well acquainted on how to choose schools, document preparation and exam preparation.



## University/Vocational entry preparation schedule

Preparation will differ depending on the educational institute that you want to enter.

We in MANABI immediately do an academic guidance and check the student’ s goal. We guide the students individually until they pass the entrance exams.



## Entry achievements (Past 3 years)

### Graduate school 130 students above

Tokyo University  
Kyoto University  
Nagoya University  
Ochanomizu University  
Hiroshima University  
Waseda University  
Tokyo University of the Arts  
Tokyo Metropolitan University  
University of Electro-Communications  
Joshibi University of Art and Design  
Tokyo University of Agriculture and Technology

Sophia University  
Meiji University  
Tama Art University  
Rikkyo University  
Hosei University  
Chuo University (dan lain-lain)

### University 280 students above

University of Tsukuba  
Waseda University  
Meiji University  
Rikkyo University  
Hosei University  
Gakushuin University  
Kwansei Gakuin University  
Ritsumeikan University  
Meiji Gakuin University  
Musashino Art University  
Joshibi University of Art and Design

Tama Art University  
Dokkyo University  
Nihon University  
Toyo University  
Kokugakuin University  
Nishogakusha University  
Tokyo Denki University  
Digital Hollywood University (dan lain-lain)

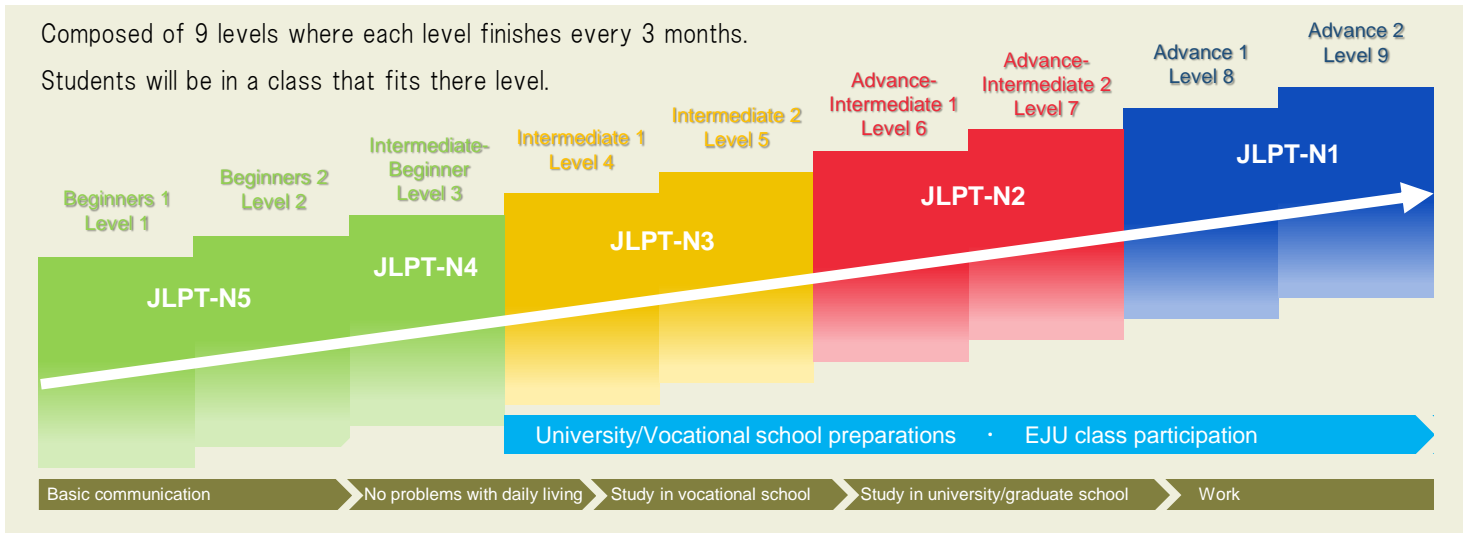
### Vocational school 530 students above

Bunka Fashion College  
Nihon Kogakuin College  
Japan Electronics College  
Hiko Mizuno College of Jewelry  
Hollywood University of Beauty & Fashion  
ICS College of Arts  
Toho Gakuen Media Training College  
Ecole De Patisserie De Tokio (dan lain-lain)

# Learning level

Composed of 9 levels where each level finishes every 3 months.

Students will be in a class that fits their level.



## EJU review class

Around 760 universities, and mostly national universities require EJU (Examination for Japanese University Admission for International Students) for entrance examinations.

Schedule	February ~ June, July ~ November
Japanese course	Reading, listening and hearing comprehension, description
Optional courses	General subject (politics, economics, modern society, world history, Japanese history) Mathematics (I, II) Science (physics, chemistry, biology)



Sample curriculum

Time	Monday	Tuesday	Wednesday	Thursday	Friday
8:40~10:20	Core: Japanese Class				
10:40~12:20	JLPT-N1	EJU Japanese	JLPT-N1	EJU Japanese	JLPT-N1
15:10~16:50		EJU General Subject		EJU Mathematics	



## JLPT review classes

JLPT (Japanese Language Proficiency Test) is one of the most taken Japanese tests in the world.

In addition, if you are a N1 or N2 passer of course you will have an advantage when finding work, and there is a possibility that you will be exempted from entrance examinations for university entry.

### ◆ Mock exams are done every 3 months to check Japanese capability

You can take the mock exams for free and you'll be able to feel real improvement.

### ◆ JLPT intensive class 1 month before the exam

We are going to get the score by focusing on the points that might come out in the exams.

We are proud that there are a lot of N1 and N2 passers especially from Indonesia and Vietnam which is a non-kanji country.



## Daily living support

## Part-time job support

There would be no problem for first timers since staff will fully support them in choosing part-time jobs.



### How to apply for a part-time job



Latest information is put on the Message Boards of the school



Write resume in Japanese



Interview practice



Actual interview

✂ Students are only allowed to work up to 28 hours / week

## Sickness and injury

For students that are not yet used in Japan, the staff will go with them to the hospital.

Since MANABI's students are subscribed in the International students insurance and government health card they can feel at ease.



◆ Insurance graph for medical expenses

**30%**  
International student insurance  
After admission in MANABI

**70%**  
Government health card  
By paying monthly fee the government will bear the medical expenses.  
International students are obliged to register.

You will bear the 30% medical expenses but the will be refunded when you apply for this system. There are medical treatments that are not applicable in this insurance. Contact us for details. [www.jlic.or.jp/plan.html](http://www.jlic.or.jp/plan.html)

## Student dormitory (Apr. 2020 ~ Mar. 2021)

Nagano Campus 7 Dormitories

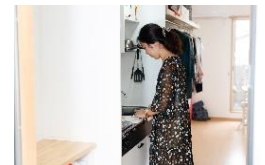
2 persons/room 17.000~33.300 JPY

1 person/room 30.300~55.300 JPY

Tokyo Campus 3 Dormitories

2 persons/room 29.000~37.000 JPY

1 person/room 58.000 JPY





**MANABI 外語学院**

MANABI Japanese Language Institute

学生寮のご案内

# Dormitory Information

長期留学用 for LONG-TERM STUDY

# 10

Dormitories

Apr.2020~Mar.2021

全室エアコン, Wi-Fi付!  
All rooms have air  
conditioner and Wi-Fi

さあ、MANABIで新生活を始めよう♪

Let's start your new life in MANABI

*NAGANO + TOKYO*





## 契約・料金・キャンセルについて

---

### ◆契約について

- ・契約期間は入寮してから6か月です。更新後は3か月毎の契約になります。
- ・契約期間中は退寮することはできません。
- ・退寮および継続について契約満了期間の2か月前までに申し出てください。

### ◆料金について

- ・この寮案内は長期留学用です。短期コースご入学の場合は別紙をご確認ください。
- ・入寮時に下記の費用をお支払いください。
  - ①入寮費 30,000円
  - ②保証金 20,000円
  - ③6か月分の月々の費用... (家賃 + 水道光熱費5,000円)
- ・入寮時に布団セットを任意で購入できます。
- ・水道光熱費が月に5000円を超えた場合、超過分をお支払いください。
- ・保証金は退寮手続き後、荷物の搬出を確認し、部屋のチェックを行ってから下記の費用を差引いて返還します。
  - ①室内清掃費 5,000円
  - ②水道光熱費の精算金
  - ③壁、床、および室内の備品に傷や汚れがあった場合の修繕費

### ◆キャンセル既定

- ・料金お支払い後のキャンセルまたはビザ不交付等で不入学となった場合、支払い額からキャンセル料30,000円を差し引いた金額を返金します。
- ・当初の入国予定を1か月経過しても入国できなかった場合は、入寮申し込みを一旦キャンセルし、キャンセル料として30,000円を支払っていただきます。入国予定が決まった段階で改めて入寮申し込みと不足分の寮費を支払っていただきます。
- ・入寮後にキャンセルした場合、返金できません。

## About contracts, fees and cancellations

---

### ◆About the contract

- ・ Contract period starts upon dormitory entry for 6 months. After 6 months it will be renewed every 3 months.
- ・ You can not leave the dormitory during the contract period.
- ・ Inform the school whether you wish to leave or stay in the dormitory 2 months before the end of contract period.

### ◆About the fees

- ・ This dormitory information is for long-term students. A different guide is provided for short-term students.
- ・ Pay the said amount below when you wish to live in the school dormitory.
  - ①Entry fee ¥ 30,000
  - ②Deposit ¥ 20,000
  - ③6 months fee (includes: Rent + ¥ 5,000 utility fee)
- ・ Bedclothes (futon set) is optional.
- ・ If utility fee goes beyond ¥5,000, student are required to pay for the excess.
- ・ Deposit money will be refunded after we confirm all of student's belongings are brought out from the room at the room check by staff. We deduct following amounts from the deposit and then refund the remaining to you.
  - ①Room cleaning fee ¥5,000
  - ②Excess charge for utility fee if there is.
  - ③Facility repairing cost if necessary, like in case walls, floors or any equipment inside the room has been destroyed.

### ◆About cancellation

- ・ In case you cancelled using our dormitory or you need to give up entering MANABI due to the rejection of VISA application after the dormitory fee payment was completed, we will refund the amount after deducting the Dormitory Cancellation fee 30000 yen.
- ・ In case you didn't come to Japan later than one month from your initial planned date for entering Japan, we once cancel your dormitory application once with billing ¥ 30,000 as cancellation charge. After the schedule of your entrance to Japan is decided again, we would accept your dormitory application and then charge the amount of shortage for dormitory fees.
- ・ No refund is applicable for cancellations requested after school admission.



1か月 monthly rent cost  
1人使用 Single

**30,300** 円 yen

入居時費用  
Initial Payment

261,800円 yen



1か月 monthly rent cost  
2人使用  
Shared by 2 people

**17,000** 円 yen

入居時費用  
Initial Payment

182,000円 yen

## アビリティマンション Ability Mansion

長野県上田市材木町 / Zaimokucho, Ueda, Nagano



about 8m<sup>2</sup>



学校まで  
to school



9分 min



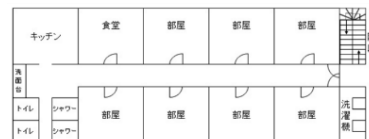
18分 min

【室内設備】

- エアコン ● 2段ベッド ● 机
  - 椅子 ● 冷蔵庫 ● 収納箱
- 【共同設備】
- トイレ ● シャワー ● キッチン
  - テレビ ● 洗濯機 ● 電子レンジ

【Room Facilities】

- air conditioner ● bunk bed ● desk
  - chair ● refrigerator ● storage box
- 【Shared Facilities】
- toilet ● shower room ● kitchen ● TV
  - microwave oven ● washing machine



1か月 monthly rent cost  
1人使用 Single

**42,500** 円 yen

入居時費用  
Initial Payment

335,000円 yen



1か月 monthly rent cost  
2人使用  
Shared by 2 people

**24,500** 円 yen

入居時費用  
Initial Payment

227,000円 yen

## ホープマンション Hope Mansion

長野県上田市中央東 / Chuou Higashi, Ueda, Nagano



about 20m<sup>2</sup>



学校まで  
to school



9分 min



18分 min

【室内設備】

- エアコン ● 机
- 冷蔵庫 ● 電子レンジ
- キッチン ● トイレ
- シャワー

【共同設備】

- 洗濯機
- 乾燥機 (有料)

【Room Facilities】

- air conditioner
- table ● refrigerator
- microwave oven
- kitchen ● toilet
- shower room

【Shared facilities】

- washing machine
- dryer (prepaid)



1か月 monthly rent cost  
1人使用 Single

**45,500** 円 yen

入居時費用  
Initial Payment

353,000円 yen



1か月 monthly rent cost  
2人使用  
Shared by 2 people

**28,500** 円 yen

入居時費用  
Initial Payment

251,000円 yen

## みすずアパート Misuzu Apartment

長野県上田市中央 / Chuou, Ueda, Nagano



about 20m<sup>2</sup>



学校まで  
to school



5分 min



10分 min

【室内設備】

- エアコン
- 2段ベッド
- 机 ● 椅子
- 冷蔵庫
- 洗濯機
- 電子レンジ
- キッチン
- シャワー
- トイレ

【Room Facilities】

- air conditioner
- bunk bed
- desk ● chair
- refrigerator
- washing machine
- microwave oven
- kitchen
- shower room
- toilet



1か月 monthly rent cost  
1人使用 Single

**45,500** 円 yen

入居時費用  
Initial Payment 353,000円 yen

1か月 monthly rent cost  
2人使用 Shared by 2 people

**28,500** 円 yen

入居時費用  
Initial Payment 251,000円 yen

## ビレッジハウス上田

Village House Ueda

長野県上田市中央北 / Chuou-kita, Ueda, Nagano



about 29m<sup>2</sup>



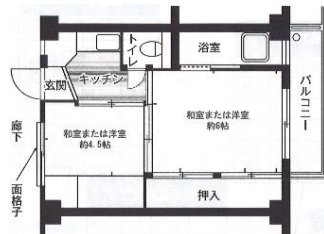
学校まで  
to school



13分 min



26分 min



【室内設備】

- エアコン
- 机
- 洗濯機
- 冷蔵庫
- 電子レンジ
- キッチン
- シャワー
- トイレ

【Room Facilities】

- air conditioner
- table
- washing machine
- refrigerator
- microwave
- kitchen
- shower room
- toilet

1か月 monthly rent cost  
1人使用 Single

**55,300** 円 yen

入居時費用  
Initial Payment 411,800円 yen

1か月 monthly rent cost  
2人使用 Shared by 2 people

**33,300** 円 yen

入居時費用  
Initial Payment 279,800円 yen

## ピースマンション

Peace Mansion

長野県上田市材木町 / Zaimokucho, Ueda, Nagano



about 20m<sup>2</sup>



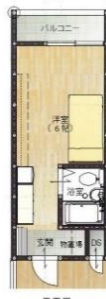
学校まで  
to school



9分 min



18分 min



【室内設備】

- エアコン
- 2段ベッド
- 机 ●椅子
- 洗濯機
- 冷蔵庫
- 電子レンジ
- キッチン
- シャワー
- トイレ

【Room Facilities】

- air conditioner
- bunk bed
- desk ●chair
- washing machine
- refrigerator
- microwave oven
- kitchen
- shower room
- toilet

1か月 monthly rent cost  
1人使用 Single

**40,300** 円 yen

入居時費用  
Initial Payment 321,800円 yen

## 半田ハイツ

Handa Heights

長野県上田市中央 / Chuou, Ueda, Nagano



about 17m<sup>2</sup>



学校まで  
to school



7分 min



14分 min



【室内設備】

- エアコン
- ミニデスク
- 冷蔵庫
- 洗濯機
- 電子レンジ
- キッチン
- シャワー
- トイレ

【Room Facilities】

- air conditioner
- small desk
- refrigerator
- washing machine
- microwave oven
- kitchen
- shower room
- toilet

男性寮  
Men's dormitory



1か月 monthly rent cost  
1人使用 Single  
**38,500** 円 yen

入居時費用  
Initial Payment 311,000円 yen

シティハイツ

City Heights

長野県上田市大手 / Ote, Ueda, Nagano



about 7m<sup>2</sup>



学校まで  
to school

自転車 2分 min 徒歩 4分 min



【室内設備】

- エアコン
- ベッド ● 机
- 椅子
- 冷蔵庫
- テレビ

【共用設備】

- 洗濯機 (有料)
- 電子レンジ
- シャワー
- トイレ

【Room Facilities】

- air conditioner
- bunk bed ● desk
- chair
- refrigerator
- TV

【Shared facilities】

- coin laundry
- microwave oven
- kitchen
- shower room
- toilet



1か月 monthly rent cost  
1人使用 Single  
**58,000** 円 yen

入居時費用  
Initial Payment 428,000円 yen

About 8 m<sup>2</sup>

女性寮  
Dormitory for Female



1か月 monthly rent cost  
2人使用 Shared by 2 people  
**37,000** 円 yen

入居時費用  
Initial Payment 302,000円 yen

About 8 m<sup>2</sup>

シェアハウス両国  
Share House Ryogoku



1か月 monthly rent cost  
6人使用 Shared by 6 people  
**33,000** 円 yen

入居時費用  
Initial Payment 278,000円 yen

About 27 m<sup>2</sup>

東京都墨田区亀沢  
Kamezawa, Sumida, Tokyo



学校まで  
to school

徒歩 15分 min  
自転車 8分 min

JR両国駅まで徒歩8分  
8 min. to JR Ryogoku sta. on foot

【室内設備】

- 二段ベッド ● 机
- 椅子 ● エアコン
- 冷蔵庫
- クローゼット

【共用設備】

- キッチン ● トイレ
- シャワー
- 洗濯機
- 電子レンジ
- IH クッキングヒーター

【Room Facilities】

- bunk bed ● desk
- chair ● air conditioner
- refrigerator
- closet

【Shared facilities】

- kitchen ● toilet
- shower
- washing machine
- microwaves
- IH cooking Heater



1か月 monthly rent cost  
4人使用  
Shared by 4 people  
**29,000** 円 yen

入居時費用  
Initial Payment **254,000**円 yen

## 西小岩寮

### Nishi Koiwa Dormitory

東京都江戸川区西小岩 / Nishi-Koiwa, Edogawa, Tokyo



about 35 m<sup>2</sup>

学校まで  
to school



**22**分 min

JR小岩駅まで徒歩4分  
4 min. to JR Koiwa sta. on foot

#### 【室内設備】

- ベッド
- 机 ●椅子
- エアコン
- クローゼット
- キッチン
- トイレ ●シャワー
- 冷蔵庫
- 洗濯機
- テレビ

#### 【Room Facilities】

- bed
- desk ●chair
- air conditioner
- closet
- kitchen
- toilet ●shower
- refrigerator
- washing machine
- TV



## 男性寮 Dormitory for Male



1か月 monthly rent cost  
2人使用  
Shared by 2 people  
**29,000** 円 yen

入居時費用  
Initial Payment **254,000**円 yen



1か月 monthly rent cost  
3人使用  
Shared by 3 people  
**27,000** 円 yen

入居時費用  
Initial Payment **242,000**円 yen

## 南小岩寮

### Minami Koiwa Dormitory

東京都江戸川区南小岩 / Minami-Koiwa, Edogawa, Tokyo



about 13-16m<sup>2</sup>

学校まで  
to school



**25**分 min

JR小岩駅まで徒歩7分  
Take 7min. to JR Koiwa sta. on foot

#### 【室内設備】

- ハイベッド
- 机 ●椅子
- エアコン
- 冷蔵庫
- クローゼット

#### 【Room Facilities】

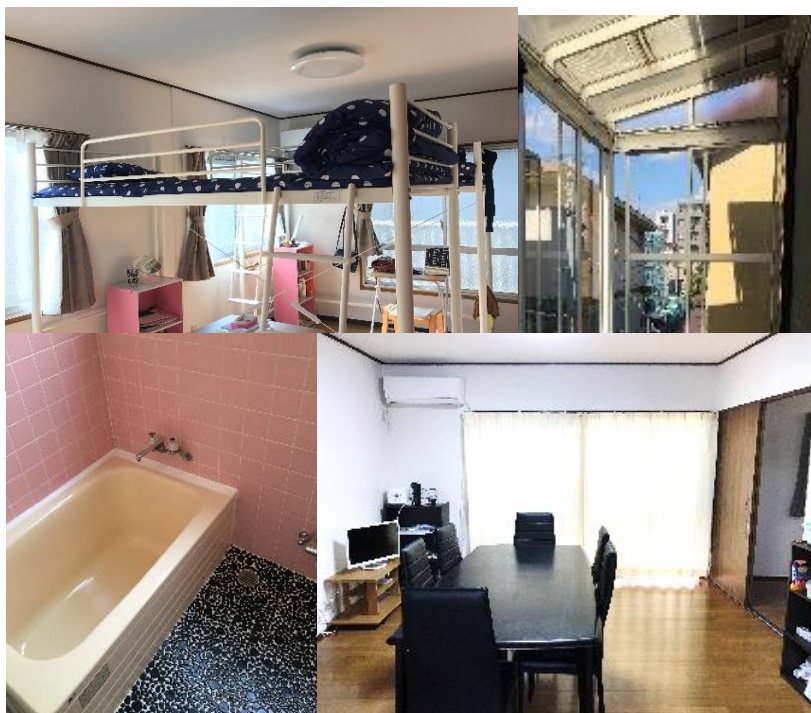
- high bed
- desk ●chair
- air conditioner
- refrigerator
- closet

#### 【共用設備】

- キッチン
- トイレ
- シャワー
- 洗濯機
- テレビ

#### 【Shared facilities】

- kitchen
- toilet
- shower
- washing machine
- TV



# Dormitory List (For Nagano Campus)

NAGANO Campus													
MANABI Students Dormitory													
		Ability Mansion		Hope Mansion		Peace Mansion		Misuzu Apartment		Village house ueda		Handa Heights	City Heights
		single	Shared by 2 people	single	Shared by 2 people	single	Shared by 2 people	single	Shared by 2 people	single	Shared by 2 people	single	single
Monthly Cost	Rent cost	30,300	17,000	42,500	24,500	55,300	33,300	45,500	28,500	45,500	28,500	40,300	38,500
	Utility cost	5,000		5,000		5,000		5,000		5,000		5,000	5,000
	Total	35,300	22,000	47,500	29,500	60,300	38,300	50,500	33,500	50,500	33,500	45,300	43,500

Initial Payment (6 months)	261,800	182,000	335,000	227,000	411,800	279,800	353,000	251,000	353,000	251,000	321,800	311,000
	= Entrance Fee 30,000yen + Deposit 20,000yen + 6months × ( Monthly cost : Rent cost + Utility cost 5,000yen )											
Futon Set	11,000											

※ Tax included

※ Currency is in Japanese yen.

Wi-Fi	○	○	○	○	○	○	○	○
Air conditioner	○	○	○	○	○	○	○	○
Female Room	○	○	○	○	○	○	○	×
Male Room	○	○	○	○	○	○	○	○
Room Toilet	×	○	○	○	○	○	○	×
Room shower	×	○	○	○	○	○	○	×
beds	○	×	○	○	○	×	×	○
Maximum Capacity	34人	26人	28人	18人	10人	2人	2人	

Distance from school	about 1.4km	about 1.4km	about 1.4km	about 0.7km	about 1.9km	about 1km	about 0.3km
Methods and Travel Time	18min by foot	18min by foot	18min by foot	10min by foot	26min by foot	14min by foot	4min by foot
	9min by bike	9min by bike	9min by bike	5min by bike	13min by bike	7min by bike	2min by bike
Transport fare to school	¥0						

Ability Mansion	Hope Mansion	Peace Mansion	Misuzu Apartment	Village house ueda	Handa Heights	City Heights
-----------------	--------------	---------------	------------------	--------------------	---------------	--------------

# Dormitory List (For Tokyo Campus)

		TOKYO Campus					
		MANABI Students Dormitory					
		Share House Ryogoku			Nishikoiwa Dormitory	Minami Koiwa Dormitory	
		Shared by 1 people	Shared by 2 people	Shared by 6 people	Shared by 4 people	Shared by 2 people	Shared by 3 people
Monthly Cost	Rent cost	58,000	37,000	33,000	29,000	29,000	27,000
	Utility cost	5,000			5,000	5,000	
	Total	63,000	42,000	38,000	34,000	34,000	32,000

Initial Payment (6 months)	428,000	302,000	278,000	254,000	254,000	242,000
	= Entrance Fee 30,000yen + Deposit 20,000yen + 6months × (Monthly cost : Rent cost + Utility cost 5,000yen)					
Futon Set	8,000					

※ Tax included

※ Currency is in Japanese yen.

Wi-Fi	○	○	○	○	○
Air conditioner	○	○	○	○	○
Female Room	○	○	○	×	×
Male Room	×	×	×	○	○
Room Toilet	×	×	×	×	×
Room shower	×	×	×	×	×
beds	○	○	○	○	○
Maximum Capacity	3 persons	10~16 persons	6 persons	4 persons	10 persons

Distance from school	about 1 km	about 10.5km	about 10.5km
Methods and Travel Time	15 mins on foot	10 mins by foot + 15 mins by train	10 mins by foot + 15 mins by train
Transport fare to school	¥0	¥ 5,170/month	¥ 5, 170/month
	Share House Ryogoku	Nishikoiwa Dormitory	Minami Koiwa Dormitory



ご不明な点がございましたら、お気軽にお問合せください。

If there is anything we can help you with, please do not hesitate to contact us.

# Student Voice



**BATBAYAR ULZIIBAT**

NAGANO Campus Student

Намайг Батбаярын Өлзийбат гэдэг. Миний мөрөөдөл бол чадварлаг инженер болох. Японд сургалтын болон амьдрах орчин нь дэлхийд дээгүүрт ордог тул техник технологи өндөр хөгжсөн арлын Япон оронд боловсрол эзэмших зорилго тавьсан.

Их сургуульд элсэн суралцахад япон хэлний N1,N2 түвшинг хангасан байх шаардлага тавигддаг. Би Япон хэлийг орчинд нь очиж судлае гэж шийдээд хэлний бэлтгэлийн олон сургуулийг судалж үзсэний үндсэн дээр Олон Улсын Япон Хэлний МАНАБИ сургуулийг сонгосон юм.

МАНАБИ сургууль нь Токио, Нагано гэсэн 2 салбартай. 2018 онд Монгол улсаас анхны элсэлтээ авч, би Нагано мужийн Уэда хотын салбарт суралцаж байна. Яагаад Нагано мужийн сургуулийг сонгосон бэ гэвэл:

- Төлбөр хямд, амьдрах зардал хямд. Гэхдээ цагийн ажлын хөлс том хотуудаас бага.
  - Амар тайван, сатаарах зүйл бага.
- Энэ сургуульд ирээд 5 сар өнгөрсөн байна. Энэ хугацаанд би олон орны олон сайхан найзуудтай болсон. Япон хэлийг сурахаас гадна япон орны газар нутаг болон урлаг, соёл, ахуй амьдралтай танилцсаар байна. Япон хүмүүс их эелдэг, даруу, бие биенээ хүндэлж харьцдаг нь надад маш их таалагдсан.

МАНАБИ сургууль нь Анхан шатнаас Япон хэлний N1 түвшин хүртэл мэргэжлийн багш нар Япон хэлийг заадаг. Манай сургууль багшлах боловсон хүчин, сургуулийн материаллаг бааз бүрэн хангагдсан, багш нар нь эелдэг найрсаг, үнэхээр оюутнуудынхаа төлөө хичээж ажилладаг, оюутнууддаа үзүүлэх үйлчилгээ нь маш сайн. Сургууль маань зөвхөн Япон хэл заахаас гадна олон төрлийн арга хэмжээ зохион байгуулдаг. Үргэлж өөр өөр хөтөлбөрт хамрагдаж, өөрийгөө хөгжүүлж, хөгжилтэй зүйлс хийх нь надад их сонирхолтой байдаг. Мөн эрүүл мэндийн даатгалд гадаад оюутнуудыг заавал хамруулж жил бүр эрүүл мэндийн үзлэгт хамруулдаг.

Манай сургууль япон хэлний болон, амьдралд тань тус болох /SUPPORT/ гэсэн 2 төрлийн багштай. SUPPORT багш нар нь дотуур байр, цагийн ажил, эрүүл мэнд гэх мэт танд тулгарсан аливаа асуудлуудыг шийдвэрлэж, дэмжиж өгдөг.

Япон улс нь манай улстай харьцуулахад амьдралын өртөг харьцангуй өндөр боловч гадаад оюутнуудын хувьд сурахынхаа хажуугаар цагийн ажил хийх боломжтой. Цагийн ажлын хөлс нь ч бусад орнуудтай харьцуулахад өндөр байдаг. Манай сургууль ч гэсэн 7 хоногт 28 цаг амралт, баярын үеэр өдөрт 8 цаг ажиллахыг зөвшөөрдөг. Энэ хотод суралцахаар ирсэн анхны Монгол, олон хүн надаар монгол хүнийг төсөөлөх учраас, хүмүүсийн өмнө биеэ маш зөв авч явж, хийж буй ажилдаа хичээнгүй, бас өөртөө итгэлтэй байхыг хичээдэг болсон. Би энэ сургуульд элсэн орсондоо маш их баяртай байна. Япон хэлний түвшин маань илүү хурдан дээшилж байгаа. Би их сургуульд элсэн суралцаж төгсөөд эх орныхоо хөгжилд үнэтэй хувь нэмэр оруулж чадна гэдэгтээ бүрэн итгэлтэй байна.

## I like Japan' s pop culture



 DJURBERG ERIK  
ANDRE  
(Swedia)

Tokyo International University  
Business Economics Major

### How is MANABI's learning environment?

Classes has students from different countries. In my class the students are from six different countries. The teachers are very patient. They teach us until we understand the lesson.

### How is MANABI Tokyo Campus' atmosphere?

The charm of MANABI Tokyo campus is in its location. When I was still in Sweden, I was very interested in Japanese traditional culture and pop culture. You can still feel the traditional atmosphere in Ryogoku. And since Akihabara and Asakusa are very near, y life in Japan is very fun.

### How is life in Japan?

I have a part-time job as an English teacher for children when I do not have Japanese classes. I am an English teacher. I am very fortunate that I am able to do a part-time job in my favorite field. There are lot of part-time job opportunities like this in Tokyo.



## Nagano Campus

ADD : 2-3-1 Ote, Ueda, Nagano  
(10 minutes from Ueda Station by foot)

 +81-268-28-7788  
 [nagano@manabi.co.jp](mailto:nagano@manabi.co.jp)  
 [manabinagano](https://www.facebook.com/manabinagano)

## Tokyo Campus

ADD : 2-10-5 Ryogoku, Sumida, Tokyo  
(3 minutes from Ryogoku by foot)

 +81-3-6659-2885  
 [tokyo@manabi.co.jp](mailto:tokyo@manabi.co.jp)  
 [manabitokyo](https://www.facebook.com/manabitokyo)