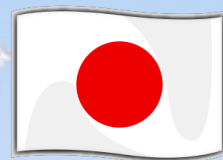


April 7 ~ May 6, 2020

2020 Spring Program

In NAGANO JAPAN

It is a special program where you can experience various Japan's cultures while studying Japanese in a place surrounded by nature and a city of samurais, Ueda City Nagano Prefecture.



長野

NAGANO



Period・Participation Fee

2
Weeks

April 7 (Tue)
▽
April 21 (Tue)

128,000 JPY~

4
Weeks

April 7 (Tue)
▽
May 6 (Tue)

194,000 JPY~

Application Deadline
February 28, 2020



MANABI

JAPANESE LANGUAGE INSTITUTE
NAGANO Campus



Accommodation and Participation Fee

Ueda Daiichi Hotel



5-mins walk to school
w/o meals
Located at the heart of the city
Very convenient



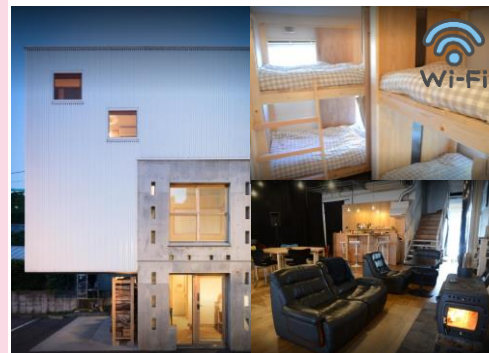
Ueda Park Hotel



18-mins walk to school
w/o meals
There is a kitchen for cooking.
The room will be Japanese or
weastern.



SAI NO TSUNO



5-min to school on foot
w/o meals
shared house from 2 to 4 people



Single

Single

Shared

2 Weeks

167,000 JPY

2 Weeks

128,000 JPY

2 Weeks

128,000 JPY

4 Weeks

216,000 JPY

4 Weeks

194,000 JPY

4 Weeks

194,000 JPY

		4 週間	2週間
7-Apr	Tue	Entry	
8-Apr	Wed	Placement test	
9-Apr	Thu	Entrance ceremony, Orientation	
10-Apr	Fri	Class	
11-Apr	Sat	Free day	
12-Apr	Sun	Free day	
13-Apr	Mon	Cherry blossom viewing	
14-Apr	Tue	Class	
15-Apr	Wed	Strawberry picking + Class	
16-Apr	Thu	Class	
17-Apr	Fri	Tea Ceremony + Class	
18-Apr	Sat	Free day	
19-Apr	Sun	Free day	
20-Apr	Mon	Class	Class + Completion Ceremony
21-Apr	Tue	Calligraphy + Class	Departure
22-Apr	Wed	Class	
23-Apr	Thu	Yukata + Class	
24-Apr	Fri	Class	
25-Apr	Sat	Free day	
26-Apr	Sun	Free day	
27-Apr	Mon	Zazen Meditation + Class	
28-Apr	Tue	Class	
29-Apr	Wed	Ueda Sanada Festival	
30-Apr	Thu	Class	
1-May	Fri	Class + Completion Ceremony	
2-May	Sat	Free day	
3-May	Sun	Free day	
4-May	Mon	Free day	
5-May	Tue	Free day	
6-May	Wed	Departure	

• This program will be implemented by three or more participants.

• Above amount includes taxes.

• Participation fee includes tuition, activity, airport – transfer fee(From the airport to Ueda city), accommodation fee and insurance while staying here in Japan.

• Airfare, class material fees and transportation expenses from Ueda city to the airport are not included.

• For twin rooms please apply by pair.

• Depending on the circumstances of the hotel, we may not be able to prepare the hotel, room you preferred.

• You can study in a class according to your level. Also, depending on your level you will be placed in the AM(8:40-12:20) class or PM(13:10-16:50) class.

• Schedule may be subjected to change.



MANABI 外語学院

MANABI Japanese Language Institute

長野校 NAGANO Campus

tel : +81-268-28-7788
mail : nagano@manabi.co.jp

English
OK!

URL : www.manabi.co.jp



“manabinagano”



〒386-0024 長野県上田市大手2-3-1 YCCビル
2-3-1 YCC Bldg. Ote, Ueda-Shi, Nagano, Japan, 386-0024