



MANABI 外語学院
MANABI Japanese Language Institute

學生宿舍指南

長期留學版

April 2025 ~ March 2026



長野校 NAGANO Campus

長野県上田市大手2-3-1 YCC第2ビル
2-3-1 YCC NO.2 bldg., Ote, Ueda, Nagano, Japan



東京校 TOKYO Campus

東京都墨田区両国2-10-5 TOC両国ビル
2-10-5 Ryogoku, TOC bldg., Sumida, Tokyo, Japan

長野校
NAGANO

Ability Mansion
能力宿舍

長野県上田市材木町2-9-13 / 2-9-13 Zaimokucho, Ueda, Nagano

□距離學校 / to School

9分 / 18分
min. / min.

交通費到學校所需交通費：0日圓

□地圖 / Map



Google Maps

8㎡



單人間 / Single

1個月房費 (含煤氣・水費)
Monthly rent cost
(Gas and water charges included)

36,000日圓

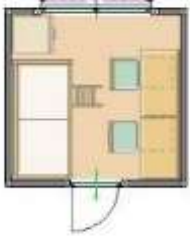
8㎡



雙人間 /
Shared by 2 people

1個月房費 (含煤氣・水費)
Monthly rent cost
(Gas and water charges included)

23,000日圓



詳細內容請觀看視頻
Check it out in the video !



YouTube

□房間設備 / Room Facilities

空調	Air conditioner
冰箱	Refrigerator
雙層床	Bunk beds
收納箱	Storage box
桌子	Desk
椅子	Chair

□共用設備 / Shared Facilities

廚房	Kitchen
廁所	Toilet
淋浴房	Shower room
洗面台	Sinks
食堂	Dining
微波爐	Microwave oven
洗衣機	Washing machine
吸塵器	Vacuum cleaner

□每月費用 / Monthly cost

※價格如有更改恕不另行通知。

	單人間 Single	雙人間 Shared by 2
房租 Rent	36,000日圓	23,000日圓
電費 Electric bill	5,000日圓	5,000日圓
總額 Total	41,000日圓	28,000日圓

□入住時費用 / Initial Payment

入寮費 Entry fee	30,000日圓	30,000日圓
押金 Deposit	40,000日圓	40,000日圓
6個月房租 6 months rent	216,000日圓	138,000日圓
6個月電費 6 months Electric bill	30,000日圓	30,000日圓
被褥套裝 A set of futons	13,200日圓	13,200日圓
總額 Total	329,200日圓	251,200日圓

長野校
NAGANO

Hope Mansion
希望宿舎

長野県上田市中央東2-20 / 2-20 Chuou Higashi, Ueda, Nagano

□距離學校 / to School

9分 / 18分

交通費到學校所需交通費：0日圓

□地圖 / Map



Google Maps

20㎡



單人間 / Single

1個月房費 (含煤氣・水費)
Monthly rent cost
(Gas and water charges included)

49,000日圓

20㎡



雙人間 /
Shared by 2 people

1個月房費 (含煤氣・水費)
Monthly rent cost
(Gas and water charges included)

31,000日圓



詳細內容請觀看視頻
Check it out in the video !



YouTube

□房間設備 / Room Facilities

廚房	Kitchen
廁所	Toilet
淋浴房	Shower room
衣櫃	Closet
空調	Air conditioner
冰箱	Refrigerator
微波爐	Microwave oven
桌子	Table
高架床	Loft bed
桌子	Desk
椅子	Chair

□共用設備 / Shared Facilities

洗衣機	Laundry machine
乾燥機 (付費)	Dryer (prepaid)
吸塵器	Vacuum cleaner

□每月費用 / Monthly cost

※價格如有更改恕不另行通知。

	單人間 Single	雙人間 Shared by 2
房租 Rent	49,000日圓	31,000日圓
電費 Electric bill	5,000日圓	5,000日圓
總額 Total	54,000日圓	36,000日圓

□入住時費用 / Initial Payment

入寮費 Entry fee	30,000日圓	30,000日圓
押金 Deposit	40,000日圓	40,000日圓
6個月房租 6 months rent	294,000日圓	186,000日圓
6個月電費 6 months Electric bill	30,000日圓	30,000日圓
被褥套裝 A set of futons	13,200日圓	13,200日圓
總額 Total	407,200日圓	299,200日圓

長野校
NAGANO

Peace Mansion
和平宿舍

長野県上田市材木町2-9-12 / 2-9-12 Zaimokucho, Ueda, Nagano

□距離學校 / to School

9分 / 18分

交通費到學校所需交通費：0日圓

□地圖 / Map



Google Maps

20㎡



單人間 / Single

1個月房費 (含煤氣・水費)
Monthly rent cost
(Gas and water charges included)

61,000日圓

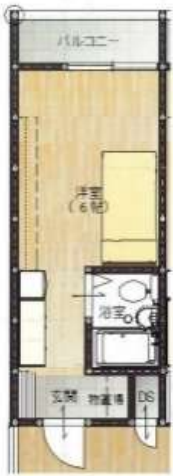
20㎡



雙人間 /
Shared by 2 people

1個月房費 (含煤氣・水費)
Monthly rent cost
(Gas and water charges included)

39,000日圓



詳細內容請觀看視頻
Check it out in the video !



YouTube

□房間設備 / Room Facilities

廚房	Kitchen
廁所	Toilet
淋浴房	Shower room
空調	Air conditioner
冰箱	Refrigerator
微波爐	Microwave oven
洗衣機	Laundry machine
雙層床	Bunk beds
收納盒	Storage box
桌子	Desk
椅子	Chair

□每月費用 / Monthly cost

※價格如有更改恕不另行通知。

	單人間 Single	雙人間 Shared by 2
房租 Rent	61,000日圓	39,000日圓
電費 Electric bill	5,000日圓	5,000日圓
總額 Total	66,000日圓	44,000日圓

□入住時費用 / Initial Payment

入寮費 Entry fee	30,000日圓	30,000日圓
押金 Deposit	40,000日圓	40,000日圓
6個月房租 6 months rent	366,000日圓	234,000日圓
6個月電費 6 months Electric bill	30,000日圓	30,000日圓
被褥套裝 A set of futons	13,200日圓	13,200日圓
總額 Total	479,200日圓	347,200日圓

長野校
NAGANO

租賃公寓 單人使用
Rented apartment_Single

□距離學校 / to School

2~10  / 4~20 
分 min / 分 min

交通費到學校所需交通費：0日圓



單人間 / Single

1個月房費（含煤氣・水費）
Monthly rent cost
(Gas and water charges included)

48,000 ~ 60,000 日圓

如果前述的學生宿舍已滿員，學校會租用外部的公寓等作為宿舍。您無法指定具體的房源和費用。
If the dormitories mentioned above are full, the school will rent an apartment or other property to use as a dormitory. You cannot specify the property or price.

◆宿舍型 Dormitory type

廚房、廁所、淋浴和洗衣機（付費）共用
The kitchen, toilet, shower and washing machine (fee required) are shared.

◆公寓型 Apartment type

專用設備
You can use the facilities exclusively



圖片僅供參考 Product image for illustration purposes only

□設備 / Facilities

キッチン	Kitchen
トイレ	Toilet
シャワー	Shower room
エアコン	Air conditioner
冷蔵庫	Refrigerator
電子レンジ	Microwave oven
洗濯機	Laundry machine
掃除機	Vacuum cleaner
ベッド	Bed
机	Desk
椅子	Chair

□每月費用 / Monthly cost

※價格如有更改恕不另行通知。

	1人使用 Single
房租 Rent	48,000~60,000日圓
電費 Electric bill	5,000日圓
總額 Total	53,000~65,000日圓

□入住時費用 / Initial Payment

入寮費 Entry fee	30,000日圓
押金 Deposit	40,000日圓
6個月房租 6 months rent	288,000~360,000日圓
6個月電費 6 months Electric bill	30,000日圓
被褥套裝 A set of futons	13,200日圓
總額 Total	401,200~473,200日圓

長野校
NAGANO

租賃公寓 雙人使用
Rented apartment_Shared by 2
people

□距離學校 / to School

10~14分 min / 20~28分 min

交通費到學校所需交通費：0日圓



雙人間
/ Shared by 2 people

1個月房費(含煤氣·水費)
Monthly rent cost
(Gas and water charges included)

35,000 ~ 40,000 日圓

如果前述的學生宿舍已滿員，學校會租用外部的公寓等作為宿舍。您無法指定具體的房源和費用。
If the dormitories mentioned above are full, the school will rent an apartment or other property to use as a dormitory. You cannot specify the property or price.

房間為公寓型，設備為專用。
The room is an apartment type. You can use the facilities exclusively.



圖片僅供參考 Product image for illustration purposes only

□設備 / Facilities

キッチン	Kitchen
トイレ	Toilet
シャワー	Shower room
エアコン	Air conditioner
冷蔵庫	Refrigerator
電子レンジ	Microwave oven
洗濯機	Laundry machine
掃除機	Vacuum cleaner
ベッド	Bed
机	Desk
椅子	Chair

□每月費用 / Monthly cost

※價格如有更改恕不另行通知。

	1人使用 Single
家賃 Rent	35,000~40,000日圓
電費 Electric bill	5,000日圓
合計 Total	40,000~45,000日圓

□入住時費用 / Initial Payment

入寮費 Entry fee	30,000日圓
押金 Deposit	40,000日圓
6個月房租 6 months rent	210,000~240,000日圓
6個月電費 6 months Electric bill	30,000日圓
被褥套裝 A set of futons	13,200日圓
總額 Total	323,200~353,200日圓

合約 / 取消 / 退款規定 Contract / cancellation / refund policy

長野校
NAGANO

合約期間・入住宿舍

- 合約期間為6個月。更新後每三個月簽約一次。
- 合同期內不得退宿。
- 請在合同期滿前兩個月申請退宿或續約。
- 合同開始月份為入學學期的開始月份（4月、7月、10月、1月）。
- 請在『指定入宿日』入宿。該日期之前不得入宿。
- 僅在房間準備好的情況下，可以在合同開始月的前一個月入宿。在這種情況下，房租按天計算，電費按每天300日元計算。

費用・退住時結算

- 本宿舍指南適用於長期留學。如為短期留學，請參閱相關材料。
- 如果電費每月超過5,000日圓，請支付超出部分。
- 退宿手續完成後，確認搬出行李，並檢查房間後，將扣除以下費用後返還保證金，或者要求支付以下費用：
①退宿費用 20,000日圓 ②電費結算金額 ③牆壁、地板以及室內物品有損傷或污漬的修繕費用

取消・退款規定

- 無論理由如何，入宿費不予退還。
- 即使入境延遲，合同期內的房租仍然生效。

	入住前取消	入住後取消
入住費	無退款	無退款
保證金	100% 退款	※前項參照
房租	扣除取消申請次月之前的房租後退款	無退款
電費	100% 退款	退還取消申請次月以後的房租
被褥費	100% 退款	無退款

About Contract period / Dormitory entry

- The contract period is 6 months. After renewal, the contract will be renewed every 3 months.
- You cannot leave the dormitory during the contract period.
- Please notify us at least 2 months prior to the expiration date of your contract.
- The contract starts at the beginning of the semester in which you enter the dormitory (April, July, October, or January).
Please refer to the table below for the treatment of dormitory fees and utilities fees depending on the timing of your entry into the dormitory.
- Please enter the dormitory on the "Designated Entry Date". No one will be allowed to move in before this date.
- However You can enter the dormitory in the previous month of the contract start month only if a room is available. In this case, rent will be calculated on a daily basis. Electricity bill will be calculated as 300 yen per day.

About Fees / Leaving the dormitory

- This dormitory guide is for long-term students. If you are enrolling on a short-term plan, please refer the separate sheet.
- If electricity bill exceeds 5,000 yen per month, please pay the excess amount.
- The security deposit will be refunded or charged after the move-out procedure, after confirming the removal of luggage and checking the room, and after deducting the following expenses.
(1) Cleaning and maintenance :20,000 (2) Electricity bill reimbursement (3) Repair expenses in case of damage or stains on walls, floors, and fixtures in the room

Cancellation / refund policy

- Regardless of the reason, the dormitory fee will not be refunded.
- Rent described in contract will be charged even if your arrival is delayed in Japan.

	Cancellation before entering dormitory	Cancellation after entering dormitory
Entry fee	No refunds	No refunds
Deposit	100% refunds	*See previous section.
Rent	Amount will be refunded from the second month of cancellation of the request	No refunds
Electricity Fee	100% refundable	Amount from next month will be refunded after the cancellation request
cost of a futon	100% refundable	No refunds



□距離學校 / to School

8分 / 15分

交通費到學校所需交通費：0日圓

□地圖 / Map



Google Maps

單人間 / Single 8㎡

1個月房費
(含煤氣・水費)
Monthly rent cost
(Gas and water
charges included)

80,000

日圓

雙人間 / Shared by 2 people 8㎡

1個月房費
(含煤氣・水費)
Monthly rent cost
(Gas and water
charges included)

44,000

日圓

三人間 / Shared by 3 people 27㎡

1個月房費
(含煤氣・水費)
Monthly rent cost
(Gas and water
charges included)

40,000

日圓



詳細內容請觀看視頻
Check it out in the video !



YouTube

□房間設備 / Room Facilities

- 衣櫃 Closet
- 空調 Air conditioner
- 冰箱 Refrigerator
- 雙層床 Bunk beds
- 桌子 Desk
- 椅子 Chair

□每月費用 / Monthly cost

*價格如有更改恕不另行通知。

	單人間 Single	雙人間 Shared by 2	三人間 Shared by 3
房租 Rent	80,000日圓	44,000日圓	40,000日圓
電費 Electric bill	5,000日圓	5,000日圓	5,000日圓
總額 Total	85,000日圓	49,000日圓	45,000日圓

□共用設備 / Shared Facilities

- 廚房 Kitchen
- 廁所 Toilet
- 淋浴房 Shower room
- 洗面台 Sink
- 微波爐 Microwave oven
- 洗衣機 Laundry machine

□入住時費用 / Initial Payment

入寮費 Entry fee	30,000日圓	30,000日圓	30,000日圓
押金 Deposit	40,000日圓	40,000日圓	40,000日圓
6個月房租 6 months rent	480,000日圓	264,000日圓	240,000日圓
6個月電費 6 months Electric bill	30,000日圓	30,000日圓	30,000日圓
被褥套裝 A set of futons	13,200日圓	13,200日圓	13,200日圓
總額 Total	593,200日圓	377,200日圓	353,200日圓

合約 / 取消 / 退款規定

Contract / cancellation / refund policy

兩國集體宿舍 Share House Ryogoku

合約期間・入住宿舍

- 合約期間為6個月。更新後每三個月簽約一次。
- 合同期內不得退宿。
- 請在合同期滿前兩個月申請退宿或續約。
- 合同開始月份為入學學期的開始月份（4月、7月、10月、1月）。
- 請在『指定入宿日』入宿。該日期之前不得入宿。
- 僅在房間準備好的情況下，可以在合同開始月的前一個月入宿。在這種情況下，房租按天計算，電費按每天300日元計算。

費用・退住時結算

- 本宿捨指南適用於長期留學。如為短期留學，請參閱相關材料。
- 如果電費每月超過5,000日圓，請支付超出部分。
- 退宿手續完成後，確認搬出行李，並檢查房間後，將扣除以下費用後返還保證金，或者要求支付以下費用：
①退宿費用 20,000日圓 ②電費結算金額 ③牆壁、地板以及室內物品有損傷或污漬的修繕費用

取消・退款規定

- 無論理由如何，入宿費不予退還。
- 即使入境延遲，合同期內的房租仍然生效。

	入住前取消	入住後取消
入住費	無退款	無退款
保證金	100% 退款	※前項參照
房租	扣除取消申請次月之前的房租後退款	無退款
電費	100% 退款	退還取消申請次月以後的房租
被褥費	100% 退款	無退款

About Contract period / Dormitory entry

- The contract period is 6 months. After renewal, the contract will be renewed every 3 months.
- You cannot leave the dormitory during the contract period.
- Please notify us at least 2 months prior to the expiration date of your contract.
- The contract starts at the beginning of the semester in which you enter the dormitory (April, July, October, or January).
- Please enter the dormitory on the "Designated Entry Date". No one will be allowed to move in before this date.
- However You can enter the dormitory in the previous month of the contract start month only if a room is available. In this case, rent will be calculated on a daily basis. Electricity bill will be calculated as 300 yen per day.

About Fees / Leaving the dormitory

- This dormitory guide is for long-term students. If you are enrolling on a short-term plan, please refer the separate sheet.
- If electricity bill exceeds 5,000 yen per month, please pay the excess amount.
- The security deposit will be refunded or charged after the move-out procedure, after confirming the removal of luggage and checking the room, and after deducting the following expenses.
(1) Cleaning and maintenance :20,000 (2) Electricity bill reimbursement (3) Repair expenses in case of damage or stains on walls, floors, and fixtures in the room

Cancellation / refund policy

- Regardless of the reason, the dormitory fee will not be refunded.
- Rent described in contract will be charged even if your arrival is delayed in Japan.

	Cancellation before entering dormitory	Cancellation after entering dormitory
Entry fee	No refunds	No refunds
Deposit	100% refunds	*See previous section.
Rent	Amount will be refunded from the second month of cancellation of the request	No refunds
Electricity Fee	100% refundable	Amount from next month will be refunded after the cancellation request
cost of a futon	100% refundable	No refunds

合作宿舍

Tie-up Dormitory

《第一恒産株式会社》運營宿舍的介紹
Introducing the dormitory operated by Daiichi-Kousan Co.,Ltd.

東京校
TOKYO

DK House Shinkoiwa

DK House 新小岩

東京都葛飾区新小岩4-4-5 / 4-4-5 Shinkoiwa, Katsushika-ku, Tokyo



8^{m²}

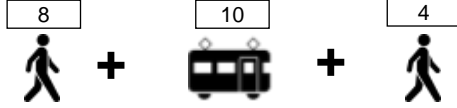
單人間 / Single

1個月房費 / Monthly rent cost

70,000 日圓

□距離學校 / to School

22
分 / min



交通費到學校所需交通費：5,270日圓 / 1個月

□地圖 / Map



Google Maps



□房間設備 / Room Facilities

空調	Air conditioner
冰箱	Refrigerator
(雙層)床	(Bunk) beds
桌子	Desk
椅子	Chair

□共用設備 / Shared Facilities

廚房	Kitchen
廁所	Toilet
淋浴房	Shower room
洗面台	Sink
洗衣機 (付費)	Laundry machine (prepaid)
乾燥機 (付費)	Dryer (prepaid)
食器類	Cutleries
微波爐	Microwaves
電腦 & 打印機	PC & printer

□每月費用 / Monthly cost

※價格如有更改恕不另行通知。

	單人間 Single
房租・水電費 Rent & Utility fees	55,000日圓
公共費 Common service fee	15,000日圓
總額 Total	70,000日圓

□入住時費用 / Initial Payment

入寮費 Entry fee	30,000日圓
押金 Deposit	20,000日圓
3個月房租・水電費 3 months rent & utility fees	165,000日圓
3個月公共費 3 months Common service fee	45,000日圓
3個月被褥租借 3 months A set of futons rent fee	10,500日圓
事務手續費 Procedure fee	10,000日圓
總額 Total	280,500日圓

合約 / 取消 / 退款規定

Contract / cancellation / refund policy

DK House 新小岩 DK House Shinkoiwa

合作宿舍

Tie-up Dormitory

租賃合約由學生和各宿舍的運營公司之間進行。
請在合約書中詳細確認合約內容

A lease agreement is signed by the student and the management company of each dormitory.

For details of the contract, please refer to the contract.

□合約期間

- DK HOUSE新小岩是《第一恒産株式会社》運營的宿舍。
- 合約期間為3個月。有關更新及續約後的合約期間等請在入居後與運營公司諮詢。
- 合約期間內無法退住。

□費用・退住時結算

- 此說明適用於長期留學。短期生入學的情況詳見別紙。
- 初期費用請支付給學校。更新後的費用直接支付給運營公司。
- 每個月100kw之內的電費包含在房租中。實際超出的費用需要支付。
- 退住時如果房間內沒有出現問題的話從押金中扣除恢復原狀的費用後返還剩餘金額。

□取消・退款規定

- 無論理由概不退還入住費。

	入住前取消	入住後取消
入寮費	無退款	無退款
押金	100%退還	※參照前項
房租・水電費 公共費	100%退還	無退款（※1 有例外）
被褥租借	無退款	無退款
事務手續費	100%退還	無退款

※入住當月取消的情況下，有特別退款的規定。詳情請諮詢。

□Regarding Contracts

- DK House Shinkoiwa is a dormitory operated by Daiichi Kosan Co.
- The contract term is 3 months. Please inquire with the management company after entering the dormitory about renewal and the length of the contract after renewal
- During the contract period, you are not allowed to leave the dormitory.

□Fees / Payment at the time of leaving the dormitory

- This dormitory guide is for long-term students. If you are enrolling on a short-term plan, please see the separate sheet.
- Please pay the initial fee to the school. Please pay the renewal fee directly to the management company.
- Utilities are included in rent up to 100kw per month. If the amount exceeds 100kw per month, the actual cost will be charged.
- If there are no problems with the room when you leave the dormitory, the deposit will be refunded minus the cost of restoring the room to its original condition.

□Cancellation / refund policy

- Regardless of the reason, the dormitory fee will not be refunded.

	Cancellation before entering dormitory	Cancellation after entering dormitory
Entry fee	No refunds	No refunds
Deposit	100% refundable	※See previous section
Rent and utilities Shared expenses	100% refundable	No refunds (*1 exceptions apply)
Futon Rental	No refunds	No refunds
Services Charge	100% refundable	No refunds

※There is a special refund policy only if the cancellation is requested within the month of entering the dormitory. Please contact us for details.

合作宿舍 Tie-up Dormitory

Introducing the dormitory operated by Inbound Japan, Pvt. Ltd.
《株式会社Inbound Japan》運營宿舍的介紹

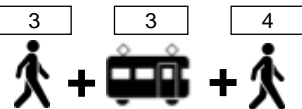
東京校
TOKYO

Shin-a Palace 新亜パレス

東京都墨田区江東橋4-20-6 / 4-20-6 Koutoubashi, Sumida-ku, Tokyo

□距離學校/ to School

10
分 / min



交通費Transportation expenses : 4280日圓 / 1個月

□地圖



Google Maps



男性宿舍 Dormitory for Male

12㎡



單人間 / Single

1個月房費 / Monthly rent cost

60,000 日圓 / yen

12㎡



雙人間 /
Shared by 2 people

1個月房費 / Monthly rent cost

30,000 日圓 / yen



□房間設備 / Room Facilities

廚房	Kitchen
廁所	Toilet
淋浴房	Shower room
洗面台	Sink
空調	Air conditioner
冰箱	Refrigerator
雙層床	Bunk beds
微波爐	Microwave oven
桌子	Table

□共用設備 / Shared Facilities

洗衣機	Laundry machine
乾燥機	Dryer
學習室	Self study room

□每月費用 / Monthly cost

※價格如有更改恕不另行通知。

	單人間 Single	雙人間 Shared by 2
房租 Rent	60,000日圓	30,000日圓
水電費・維修儲備金保險費 Utilities cost / Savings-type insurance cost for repairing of building	13,000日圓	13,000日圓
總額 Total	73,000日圓	43,000日圓

□入住時費用 / Initial Payment

入寮費 Entry fee	40,000日圓	40,000日圓
清潔費用 clearing expense	8,800日圓	8,800日圓
房租・水電費・維修儲備金保險費 6個月 6 months rent / Utilities cost / Savings-type insurance cost for repairing of building	438,000日圓	258,000日圓
火災保險費 Fire Insurance	2,000日圓	2,000日圓
被褥套裝 A set of futons	8,800日圓	8,800日圓
事務手續費 Procedure fee	10,000日圓	10,000日圓
總額 Total	507,600日圓	327,600日圓

合約 / 取消 / 退款規定

Contract / cancellation / refund policy

新垂パレス Shin-a Palace

合作宿舍

Tie-up Dormitory

租賃合約由學生和各宿舍的運營公司之間進行。

請在合約書中詳細確認合約內容

A lease agreement is signed by the student and the management company of each dormitory.

For details of the contract, please refer to the contract.

□ 合約期間

- Shin-a Palace是《Inbound Japan Co.,Ltd.》運營的宿舍。
- 合約期間為6個月。有關更新及續約後的合約期間等請在入居後與運營公司諮詢。
- 合約期間內無法退住。

□ 費用・退住時結算

- 此說明適用於長期留學。短期生入學的情況詳見別紙。
- 初期費用請支付給學校。更新後的費用直接支付給運營公司。

□ 取消・退款規定

- 無論理由概不退還入住費。

	入住前取消	入住後取消
入寮費	無退款	無退款
房租	如果在入住两个月前提前發出取消通知， 您將獲得部分退款。	從取消通知的3個月之後開始可退款。
清潔費用 水電費 維修儲備金保險費 被褥套裝 火災保險費 事務手續費	如果在入住两个月前提前發出取消通知， 您將獲得部分退款。	無退款

□ Regarding Contracts

- Shin-a palace is a dormitory operated by Inbound Japan Pvt. Ltd.
- Each contract term is 6 months. Please inquire with the management company after entering the dormitory about renewal and the length of the contract after renewal.
- During the contract period, you are not allowed to leave the dormitory.

□ Fees / Payment at the time of leaving the dormitory

- This dormitory guide is for long-term students. If you are enrolling on a short-term plan, please see the separate sheet.
- Please pay the initial fee to the school. Please pay the renewal fee directly to the management company.

□ Cancellation / refund policy

- Regardless of the reason, the entry fee will not be refunded.

	Cancellation before entering dormitory	Cancellation after entering dormitory
Entry fee	No refunds	No refunds
Rent fees	Partial refundable upon cancellation notice at least 2 months prior to move-in.	Refundable from the third month of cancellation notice.
Clearing expense Utilities cost Savings-type insurance cost for repairing of building Fire Insurance Cost of a futon Procedure fee	Partial refundable upon cancellation notice at least 2 months prior to move-in.	No refunds

合作宿舍 Tie-up Dormitory

Introducing the dormitory operated by BeGood Japan Co., Ltd.
《株式会社BeGoodJapan》運營宿舍的介紹

東京校
TOKYO

フクニチハイム Fukunichi Heim

東京都葛飾区新小岩2-38-4 / 2-38-4 Shinkoiwa, Katsushika-ku, Tokyo

□距離學校 / to School

22
分 / min

8



+

10



+

4



□地圖



Google Maps

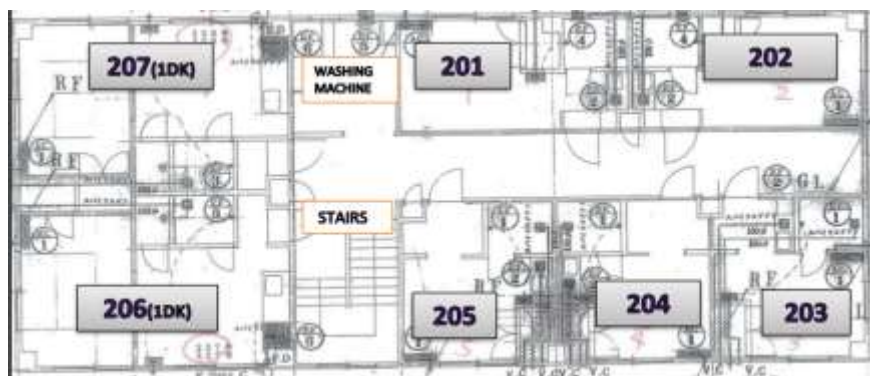
13.3㎡



單人間 / Single

1個月房費 / Monthly rent cost

71,000~ 日圓 / yen



□每月費用 / Monthly cost

※價格如有更改恕不另行通知。

	單人間 Single
房租 Rent	71,000日圓~
公共費 Common service fee	16,000日圓
總額 Total	87,000日圓~

□房間設備 / Room Facilities

廚房	Kitchen
廁所	Toilet
淋浴房	Shower room
洗手盆	Sink
空調	Air conditioner
冰箱	Refrigerator
高架床	Loft beds
衣櫥	Closet
桌子	Desk
椅子	Chair

□共用設備 / Shared Facilities

洗衣機	Laundry machine
-----	-----------------

□入住時費用 / Initial Payment

入寮費 Entry fee	16,500日圓
押金 Deposit	30,000日圓
清潔費用 clearing expense	16,500日圓
6個月房租 6 months rent	426,000日圓~
6個月公共費 6 months Common service	96,000日圓
居家財物保險 home contents insurance	7,000日圓
被褥套裝 A set of futons	11,000日圓
事務手續費 Procedure fee	10,000日圓
總額 Total	613,000日圓~

合約 / 取消 / 退款規定

Contract / cancellation / refund policy

フクニチハイム

FUKUNICHI Heim

合作宿舍

Tie-up Dormitory

租賃合約由學生和各宿舍的運營公司之間進行。
請在合約書中詳細確認合約內容

A lease agreement is signed by the student and the management company of each dormitory.

For details of the contract, please refer to the contract.

□ 合約期間

- FUKUNICHI Heim是《BeGood Japan Co., Ltd.》運營的宿舍。
- 合約期間為6個月。有關更新及續約後的合約期間等請在入居後與運營公司諮詢。
- 合約期間內無法退住。

□ 費用・退住時結算

- 此說明適用於長期留學。短期生入學的情況詳見別紙。
- 初期費用請支付給學校。更新後的費用直接支付給運營公司。
- 水電費和互聯網費已包含在公共服務費中。
- 當您搬出宿舍時，如果房間沒有問題，押金將退還。

□ 取消・退款規定

- 無論理由概不退還入住費。

	入住前取消	入住後取消
入寮費	無退款	無退款
押金	100% 退還	※參照前項
清潔費用 房租 公共費 居家財物保險 被褥套裝 事務手續費	100% 退還	無退款

□ Regarding Contracts

- FUKUNICHI Heim is a dormitory operated by BeGood Japan Co., Ltd.
- Each contract term is 6 months. Please inquire with the management company after entering the dormitory about renewal and the length of the contract after renewal.
- During the contract period, you are not allowed to leave the dormitory.

□ Fees / Payment at the time of leaving the dormitory

- This dormitory guide is for long-term students. If you are enrolling on a short-term plan, please see the separate sheet.
- Please pay the initial fee to the school. Please pay the renewal fee directly to the management company.
- Utilities and internet fees are included in the Common service fee.
- When leaving of FUKUNICHI Heim, if there are no problems with the room, the deposit will be refunded.

□ Cancellation / refund policy

- Regardless of the reason, the entry fee will not be refunded.

	Cancellation before entering dormitory	Cancellation after entering dormitory
Entry fee	No refunds	No refunds
Deposit	100% refundable	※see preceding paragraph
Clearing expense Rent fees Common service fee Home contents insurance Cost of a futon Procedure fee	100% refundable	No refunds