



MANABI 外語学院
MANABI Japanese Language Institute

中国用

长期留学生用 学生宿舍介绍

Dormitory Information

For Long-term students

April 2026 ~ March 2027



長野校 NAGANO Campus

長野県上田市大手2-3-1 YCC第2ビル
2-3-1 YCC NO.2 bldg., Ote, Ueda, Nagano, Japan



東京校 TOKYO Campus

東京都墨田区両国2-10-5 TOC両国ビル
2-10-5 Ryogoku, TOC bldg., Sumida, Tokyo, Japan



MANABI 外語学院

MANABI Japanese Language Institute

長野校宿舍 Nagano Dormitories

- 能力公寓 Ability Mansion
- 希望公寓 Hope Mansion
- 和平公寓 Peace Mansion
- 易北阁 Elbe Court

东京校宿舍 Tokyo Dormitories

- 两国集体之家 Share House Ryogoku
- DK新小岩之家 DK House Shinkoiwa
- 新亚宫殿 Shin-a Palace
- 船堀公寓 Funabori Apartment
- 福日之家 FUKUNICHI Heim



長野校 NAGANO Campus

長野県上田市大手2-3-1 YCC第2ビル
2-3-1 YCC NO.2 bldg., Ote, Ueda, Nagano, Japan



东京校 TOKYO Campus

東京都墨田区両国2-10-5 TOC両国ビル
2-10-5 Ryogoku, TOC bldg., Sumida, Tokyo, Japan

长野校
NAGANO

能力公寓 Ability Mansion

长野县上田市材木町2-9-13 / 2-9-13 Zaimokucho, Ueda, Nagano

□距离学校 / to School

9分 min. / 18分 min.

交通费 Transportation expenses : ¥ 0

□Map



Google Maps



1人使用 / Single

8㎡

租金1个月 (含燃气费、水费)
Monthly rent cost (Gas and water charges included)

36,000 日元 / yen



2人使用 /
Shared by 2 people

8㎡

租金1个月 (含燃气费、水费)
Monthly rent cost (Gas and water charges included)

23,000 日元 / yen



能力公寓是一个合租屋。请注意，厨房、淋浴间和卫生间等许多设施均为共用设施。
Ability Mansion is a shared house. Please note that many facilities, such as the kitchen, shower room, and toilets, are shared.



观看视频
Check it out in the video !



YouTube

□房间设施 / Room Facilities

空调 Air conditioner
冰箱 Refrigerator
双层床 Bunk beds
储物箱 Storage box
书桌 Desk
椅子 Chair

□公共设施 / Shared Facilities

厨房 Kitchen
厕所 Toilet
淋浴 Shower room
洗面台 Sinks
食堂 Dining
微波炉 Microwave oven
洗衣机 Washing machine
吸尘器 Vacuum cleaner

□每月开支 / Monthly cost

※价格如有变更，恕不另行通知。
Rates are subject to change without notice.

	1人使用 Single	2人使用 Shared by 2
租金 Rent (包括燃气和水费) (Gas and water charges included)	¥ 36,000	¥ 23,000
电费 Electric bill	¥ 5,000	¥ 5,000
合计 Total	¥ 41,000	¥ 28,000

□入住费用 / Initial Payment

宿舍费 Entry fee	¥ 30,000	¥ 30,000
保证金 Deposit	¥ 40,000	¥ 40,000
租金6个月 6 months rent	¥ 216,000	¥ 138,000
电费6个月 6 months Electric bill	¥ 30,000	¥ 30,000
被褥一套 A set of futons	¥ 13,200	¥ 13,200
合计 Total	¥ 329,200	¥ 251,200

长野校
NAGANO

希望公寓 Hope Mansion

长野县上田市中央东2-20 / 2-20 Chuou Higashi, Ueda, Nagano

□距离学校/ to School

9分 / 18分
min / min

交通费 Transportation expenses : ¥ 0

□Map



Google Maps

20㎡



1人使用 / Single

租金1个月 (含燃气费、水费)
Monthly rent cost (Gas and water charges included)

49,000 日元 / yen

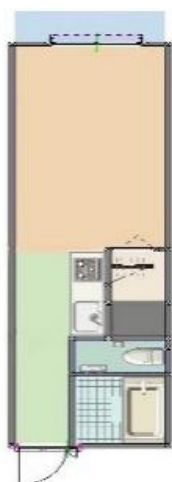
20㎡



2人使用 /
Shared by 2 people

租金1个月 (含燃气费、水费)
Monthly rent cost (Gas and water charges included)

31,000 日元 / yen



观看视频

Check it out in the video !



YouTube

□房间设施/ Room Facilities

厨房	Kitchen
厕所	Toilet
淋浴	Shower room
壁橱	Closet
空调	Air conditioner
冰箱	Refrigerator
微波炉	Microwave oven
床	bed
书桌	Desk
椅子	Chair

□公共设施/ Shared Facilities

洗衣机	Laundry machine
吸尘器	Vacuum cleaner

□每月开支/ Monthly cost

※价格如有变更, 恕不另行通知。

Rates are subject to change without notice.

	1人使用 Single	2人使用 Shared by 2
租金 Rent (含燃气费、水费) (Gas and water charges included)	¥ 49,000	¥ 31,000
电费 Electric bill	¥ 5,000	¥ 5,000
合计 Total	¥ 54,000	¥ 36,000

□入住费用/ Initial Payment

宿舍费 Entry fee	¥ 30,000	¥ 30,000
保证金 Deposit	¥ 40,000	¥ 40,000
租金6个月 6 months rent	¥ 294,000	¥ 186,000
电费6个月 6 months Electric bill	¥ 30,000	¥ 30,000
被褥一套 A set of futons	¥ 13,200	¥ 13,200
合计 Total	¥ 407,200	¥ 299,200

長野校
NAGANO

和平公寓 Peace Mansion

長野県上田市材木町2-9-12 / 2-9-12 Zaimokucho, Ueda, Nagano

□距离学校/ to School

9分 min / 18分 min

交通费 Transportation expenses : ¥ 0

□Map



Google Maps

20㎡



1人使用 / Single

租金1个月 (含燃气费、水费)
Monthly rent cost (Gas and water charges included)

61,000 日元 / yen

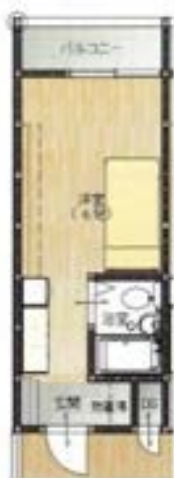
20㎡



2人使用 /
Shared by 2 people

租金1个月 (含燃气费、水费)
Monthly rent cost (Gas and water charges included)

39,000 日元 / yen



观看视频

Check it out in the video !



YouTube

□房间设施/ Room Facilities

厨房	Kitchen
厕所	Toilet
淋浴	Shower room
空调	Air conditioner
冰箱	Refrigerator
微波炉	Microwave oven
洗衣机	Laundry machine
双层床	Bunk beds
储物箱	Storage box
书桌	Desk
椅子	Chair

□每月开支/ Monthly cost

※价格如有变更，恕不另行通知。
Rates are subject to change without notice.

	1人使用 Single	2人使用 Shared by 2
租金 Rent (含燃气费、水费) (Gas and water charges included)	¥ 61,000	¥ 39,000
电费 Electric bill	¥ 5,000	¥ 5,000
合计 Total	¥ 66,000	¥ 44,000

□入住费用/ Initial Payment



宿舍费 Entry fee	¥ 30,000	¥ 30,000
保证金 Deposit	¥ 40,000	¥ 40,000
租金6个月 6 months rent	¥ 366,000	¥ 234,000
电费6个月 6 months Electric bill	¥ 30,000	¥ 30,000
被褥一套 A set of futons	¥ 13,200	¥ 13,200
合计 Total	¥ 479,200	¥ 347,200

长野校
NAGANO

易北阁 Elbe Court

长野县上田市材木町1-1-20 / 1-1-20 Zaimokucho, Ueda, Nagano

□距离学校/ to School

8  / 15  分 / min

交通费 Transportation expenses : ¥ 0

□Map



Google Maps

20 m²

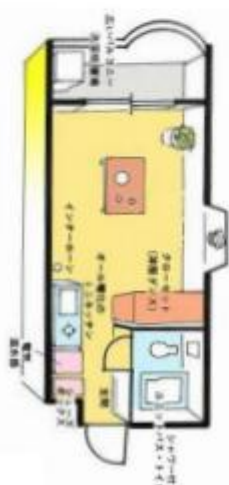


1人使用 / Single

租金1个月 (含燃气费、水费)

Monthly rent cost (Gas and water charges included)

57,000 日元 / yen



□房间设施/ Room Facilities

厨房	Kitchen
厕所	Toilet
淋浴	Shower room
空调	Air conditioner
冰箱	Refrigerator
微波炉	Microwave oven
洗衣机	Laundry machine
吸尘器	Vacuum cleaner
床	Bed
壁橱	Closet
书桌	Desk
椅子	Chair
自动锁柜	Auto lock

□每月开支/ Monthly cost

※价格如有变更，恕不另行通知。

Rates are subject to change without notice.

	1人使用 Single
租金 Rent (含燃气费、水费) (Gas and water charges included)	¥ 57,000
电费 Electric bill	¥ 5,000
合计 Total	¥ 62,000

□入住费用/ Initial Payment

宿舍费 Entry fee	¥ 30,000
保证金 Deposit	¥ 40,000
租金6个月 6 months rent	¥ 342,000
电费6个月 6 months Electric bill	¥ 30,000
被褥一套 A set of futons	¥ 13,200
合计 Total	¥ 455,200

合同・取消・退款政策

Contract / cancellation / refund policy

长野校
NAGANO

□关于合同期间・搬进宿舍

- 合同期间为三个月。更新后为每三个月一次签约。
- 合同期间无法退住。
- 需在合约到期前两个月提出退住或者续住的申请。
- 合约开始月份为入学学期的开始月份（4月、7月、10月、1月）。
- 请在『指定搬进宿舍日』搬进宿舍。该日期之前不得搬进宿舍。
- 仅在房间准备好的情况下，可以在合同开始月的前一个月搬进宿舍。在这种情况下，房租按天计算，电费按每天300日元计算。

□费用・退住时结算

- 本宿舍指南适用于长期留学。如为短期留学，请参阅相关材料。
- 如果电费每月超过5,000日元，请支付超出部分。
- 退宿手续完成后，确认搬出行李，并检查房间后，将扣除以下费用后退还保证金，或者要求支付以下费用：
 - ① 退宿费用 20,000日元
 - ② 电费结算金额
 - ③ 墙壁、地板以及室内物品有损伤或污渍的修缮费用

□取消・退款政策

- 无论出于何种原因，宿舍费将不予退款。
- 即使您入境较晚，合同期内的房租仍然生效。

	入住前取消	入住后取消
宿舍费	无退款	无退款
保证金	100% 退款	※前项参照
租金	扣除取消申请次月之前的房租后退款	无退款
电费	100% 退款	退还取消申请次月以后的房租
被褥费	100% 退款	无退款

□About Contract period / Dormitory entry

- The contract period is 6 months. After renewal, the contract will be renewed every 3 months.
- You cannot leave the dormitory during the contract period.
- Please notify us at least 2 months prior to the expiration date of your contract.
- The contract starts at the beginning of the semester in which you enter the dormitory (April, July, October, or January).
- Please enter the dormitory on the "Designated Entry Date". No one will be allowed to move in before this date.
- However, You can enter the dormitory in the previous month of the contract start month only if a room is available. In this case, rent will be calculated on a daily basis. Electricity bill will be calculated as 300 yen per day.

□About Fees / Leaving the dormitory

- This dormitory guide is for long-term students. If you are enrolling on a short-term plan, please refer the separate sheet.
- If electricity bill exceeds 5,000 yen per month, please pay the excess amount.
- The security deposit will be refunded or charged after the move-out procedure, after confirming the removal of luggage and checking the room, and after deducting the following expenses.
 - (1) Cleaning and maintenance :20,000
 - (2) Electricity bill reimbursement
 - (3) Repair expenses in case of damage or stains on walls, floors, and fixtures in the room

□Cancellation / refund policy

- Regardless of the reason, the dormitory fee will not be refunded.
- Rent described in contract will be charged even if your arrival is delayed in Japan.

	Cancellation before entering dormitory	Cancellation after entering dormitory
Entry fee	No refunds	No refunds
Deposit	100% refunds	*See previous section.
Rent	Amount will be refunded from the second month of cancellation of the request	No refunds
Electricity Fee	100% refundable	Amount from next month will be refunded after the cancellation request
cost of a futon	100% refundable	No refunds

东京校
TOKYO

两国集体之家 Share House Ryogoku

东京都墨田区亀沢2-14-9 / 2-14-9 Kamezawa, Sumida, Tokyo



女性宿舍 Dormitory for Female

□距离学校/ to School

8分 min / 15分 min

交通费 Transportation expenses : ¥ 0

□Map



Google Maps

8㎡



1人使用
/ Single

租金1个月 (含燃气费、水费)
Monthly rent cost (Gas and water charges included)

80,000

日元 / yen

8㎡



2人使用
/ Shared by 2 people

租金1个月 (含燃气费、水费)
Monthly rent cost (Gas and water charges included)

44,000

日元 / yen

27㎡



3人使用
/ Shared by 3 people

租金1个月 (含燃气费、水费)
Monthly rent cost (Gas and water charges included)

40,000

日元 / yen



观看视频
Check it out in the video !



YouTube

□房间设施/ Room Facilities

壁橱 Closet
空调 Air conditioner
冰箱 Refrigerator
双层床 Bunk beds
书桌 Desk
椅子 Chair

□每月开支/ Monthly cost

※价格如有变更，恕不另行通知。

Rates are subject to change without notice.

	1人使用 Single	2人使用 Shared by 2	3人使用 Shared by 3
租金 Rent (含燃气费、水费) (Gas and water charges included)	¥ 80,000	¥ 44,000	¥ 40,000
电费 Electric Bill	¥ 5,000	¥ 5,000	¥ 5,000
合计 Total	¥ 85,000	¥ 49,000	¥ 45,000

□公共设施/ Shared Facilities

厨房 Kitchen
厕所 Toilet
淋浴 Shower room
洗面台 Sink
微波炉 Microwave oven
洗衣机 Laundry machine

□入住费用/ Initial Payment

宿舍费 Entry fee	¥ 30,000	¥ 30,000	¥ 30,000
保证金 Deposit	¥ 40,000	¥ 40,000	¥ 40,000
租金 6个月 6 months Rent	¥ 480,000	¥ 264,000	¥ 240,000
电费6个月 6 months electricity bill	¥ 30,000	¥ 30,000	¥ 30,000
被褥一套 A set of futons	¥ 13,200	¥ 13,200	¥ 13,200
合计 Total	¥ 593,200	¥ 377,200	¥ 353,200

合同・取消・退款政策

Contract / cancellation / refund policy

两国集体之家 Share House Ryogoku

□关于合同期间・搬进宿舍

- 合同期间为6个月。更新后为每三个月一次签约。
- 合同期间无法退住。
- 需在合约到期前两个月提出退住或者续住的申请。
- 合约开始月份为入学学期的开始月份（4月、7月、10月、1月）。
- 请在『指定搬进宿舍日』搬进宿舍。该日期之前不得搬进宿舍。
- 仅在房间准备好的情况下，可以在合同开始月的前一个月搬进宿舍。在这种情况下，房租按天计算，电费按每天300日元计算。

□费用・退住时结算

- 本宿舍指南适用于长期留学。如为短期留学，请参阅相关材料。
- 如果电费每月超过5,000日元，请支付超出部分。
- 退房手续完成后，确认搬出行李，并检查房间后，将扣除以下费用后返还保证金，或者要求支付以下费用：
 - ① 退房费用 20,000日元
 - ② 电费结算金额
 - ③ 墙壁、地板以及室内物品有损伤或污渍的修缮费用

□取消・退款政策

- 无论出于何种原因，宿舍费将不予退款。
- 即使您入境较晚，合同期内的房租仍然生效。

	入住前取消	入住后取消
宿舍费	无退款	无退款
保证金	100% 退款	※前项参照
租金	扣除取消申请次月之前的房租后退款	无退款
电费	100% 退款	退还取消申请次月以后的房租
被褥代	100% 退款	无退款

□About Contract period / Dormitory entry

- The contract period is 6 months. After renewal, the contract will be renewed every 3 months.
- You cannot leave the dormitory during the contract period.
- Please notify us at least 2 months prior to the expiration date of your contract.
- The contract starts at the beginning of the semester in which you enter the dormitory (April, July, October, or January).
- Please enter the dormitory on the "Designated Entry Date". No one will be allowed to move in before this date.
- However, You can enter the dormitory in the previous month of the contract start month only if a room is available. In this case, rent will be calculated on a daily basis. Electricity bill will be calculated as 300 yen per day.

□About Fees / Leaving the dormitory

- This dormitory guide is for long-term students. If you are enrolling on a short-term plan, please refer the separate sheet.
- If electricity bill exceeds 5,000 yen per month, please pay the excess amount.
- The security deposit will be refunded or charged after the move-out procedure, after confirming the removal of luggage and checking the room, and after deducting the following expenses.
 - (1) Cleaning and maintenance :20,000
 - (2) Electricity bill reimbursement
 - (3) Repair expenses in case of damage or stains on walls, floors, and fixtures in the room

□Cancellation / refund policy

- Regardless of the reason, the dormitory fee will not be refunded.
- Rent described in contract will be charged even if your arrival is delayed in Japan.

	Cancellation before entering dormitory	Cancellation after entering dormitory
Entry fee	No refunds	No refunds
Deposit	100% refunds	*See previous section.
Rent	Amount will be refunded from the second month of cancellation of the request	No refunds
Electricity Fee	100% refundable	amount from next month will be refunded after the cancellation request
cost of a futon	100% refundable	No refunds

介绍宿舍 Tie-up Dormitory

第一恒产株式会社运营的宿舍介绍
Introducing the dormitory operated by Daiichi-Kousan Co.,Ltd.

东京校
TOKYO

DK新小岩之家 DK House Shinkoiwa

東京都葛飾区新小岩4-4-5 / 4-4-5 Shinkoiwa, Katsushika-ku, Tokyo



男女共用
Dormitory for Unisex



8㎡
1人使用 / Single

租金1个月 (含燃气费、水费)
Monthly rent & Utility fees

55,000 日元 / yen

□距离学校/ to School

22

分 / min

8



+

10



+

4



交通费 Transportation expenses : ¥ 5,270/month

□Map



Google Maps



□房间设施/ Room Facilities

空调	Air conditioner
冰箱	Refrigerator
2层床	(Bunk) beds
书桌	Desk
椅子	Chair

□公共设施/ Shared Facilities

厨房	Kitchen
厕所	Toilet
淋浴	Shower room
洗面台	Sink
洗衣机	Laundry machine
(收费)	(prepaid)
烘干机 (收费)	Dryer (prepaid)
餐具	Cutleries
微波炉	Microwaves
PC & 打印机	PC & printer

□每月开支/ Monthly cost

※价格如有变更, 恕不另行通知。

Rates are subject to change without notice.

	1人使用 Single
租金・燃气费水费 Rent & Utility fees	¥ 55,000
共益费 Common service fee	¥ 15,000
合计 Total	¥ 70,000

□入住费用/ Initial Payment

宿舍费 Entry fee	¥ 30,000
保证金 Deposit	¥ 20,000
租金・燃气费水费3个月 3 months rent & utility fees	¥ 165,000
共益费3个月 3 months Common service fee	¥ 45,000
被褥租赁3个月 3 months A set of futons rent fee	¥ 10,500
事务手续费 Procedure fee	¥ 10,000
合计 Total	¥ 280,500

合同・取消・退款政策

Contract / cancellation / refund policy

DK新小岩之家 DK House Shinkoiwa

介绍宿舍 Tie-up Dormitory

租赁合同将在学生和每个宿舍的管理公司之间签署。
详情请参阅合同书。
A lease agreement is signed by the student and the management company of each dormitory.
For details of the contract, please refer to the contract.

□关于合同

- DK新小岩之家是第一恒产株式会社运营的宿舍。
- 合同期间为3个月。有关更新及更新后的合同期间，请在搬进宿舍后与运营公司咨询。
- 合同期间中无法退住。

□费用・退住时结算

- 本宿舍指南适用于长期留学。如为短期留学，请参阅相关材料。
- 初始费用必须支付给学校。更新后的费用请向运营公司付款。
- 租金中包含了燃气费每月100kw。如果超过此金额，您将需要支付实际费用。
- 当您搬出宿舍时，如果房间没有问题，从保证金中扣除修复费用后退还。

□取消・退款政策

- 不管是什么原因，宿舍费不予退还。

	入住前取消	入住后取消
宿舍费	无退款	无退款
保证金	100%退款	※前项参照
租金・水费燃气费 共益费	100%退款	无退款（※1 例外）
被褥租赁	无退款	无退款
事务手续费	100%退款	无退款

※仅在搬进宿舍的月内的取消的情况下、有特殊的退款政策。 请联系了解详情。

□Regarding Contracts

- DK House Shinkoiwa is a dormitory operated by Daiichi Kosan Co.
- The contract term is 3 months. Please inquire with the management company after entering the dormitory about renewal and the length of the contract after renewal
- During the contract period, you are not allowed to leave the dormitory.

□Fees / Payment at the time of leaving the dormitory

- This dormitory guide is for long-term students. If you are enrolling on a short-term plan, please see the separate sheet.
- Please pay the initial fee to the school. Please pay the renewal fee directly to the management company.
- Utilities are included in rent up to 100kw per month. If the amount exceeds 100kw per month, the actual cost will be charged.
- If there are no problems with the room when you leave the dormitory, the deposit will be refunded minus the cost of restoring the room to its original condition.

□Cancellation / refund policy

- Regardless of the reason, the dormitory fee will not be refunded.

	Cancellation before entering dormitory	Cancellation after entering dormitory
Entry fee	No refunds	No refunds
Deposit	100% refundable	※See previous section
Rent and utilities Shared expenses	100% refundable	No refunds (*1 exceptions apply)
Futon Rental	No refunds	No refunds
Services Charge	100% refundable	No refunds

※There is a special refund policy only if the cancellation is requested within the month of entering the dormitory. Please contact us for details.

介绍宿舍 Tie-up Dormitory

株式会社インバウンドジャパン运营宿舍的介绍
Introducing the dormitory operated by Inbound Japan, Pvt. Ltd.

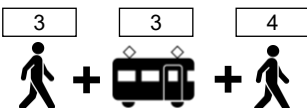
东京校
TOKYO

新亚宫殿 Shin-a Palace

东京都墨田区江东桥4-20-6 / 4-20-6 Koutoubashi, Sumida-ku, Tokyo

□距离学校/ to School

10
分 / min



交通费 Transportation expenses : ¥ 4,280/month

□Map



Google Maps



男性宿舍 Dormitory for Male

12㎡



1人使用 / Single

租金1个月 / Monthly rent cost

60,000 日元 / yen

12㎡



2人使用 /
Shared by 2 people

租金1个月 / Monthly rent cost

30,000 日元 / yen



□房间设施/ Room Facilities

厨房	Kitchen
厕所	Toilet
淋浴	Shower room
洗面台	Sink
空调	Air conditioner
冰箱	Refrigerator
双层床	Bunk beds
微波炉	Microwave oven
桌子	Table

□公共设施/ Shared Facilities

洗衣机	Laundry machine
干衣机	Dryer
书房	Self study room

□每月开支/ Monthly cost

	1人使用 Single	2人使用 Shared by 2
租金 Rent	¥ 60,000	¥ 30,000
燃气电费 and 维修储备金保险费 Utilities cost / Savings-type insurance cost for repairing of building	¥ 13,000	¥ 13,000
合计 Total	¥ 73,000	¥ 43,000

□入住费用/ Initial Payment

宿舍费 Entry fee	¥ 40,000	¥ 40,000
清洁费 clearing expense	¥ 8,800	¥ 8,800
租金 · 燃气电费 · 维修储备金保险费6个月 6 months rent / Utilities cost / Savings-type insurance cost for repairing of building	¥ 438,000	¥ 258,000
火险费 Fire Insurance	¥ 2,000	¥ 2,000
被褥一套 A set of futons	¥ 8,800	¥ 8,800
事务手续费 Procedure fee	¥ 10,000	¥ 10,000
合计 Total	¥ 507,600	¥ 327,600

※价格如有变更，恕不另行通知。

Rates are subject to change without notice.

合同・取消・退款政策

Contract / cancellation / refund policy

新亚宫殿 Shin-a Palace

介绍宿舍 Tie-up Dormitory

租赁合同将在学生和每个宿舍的管理公司之间签署。
详情请参阅合同书。
A lease agreement is signed by the student and the management company of each dormitory.
For details of the contract, please refer to the contract.

□关于合同

- 新亚宫殿为株式会社インバウンド・ジャパン运营的宿舍。
- 合同期间为6个月。有关更新及更新后的合同期间，请在搬进宿舍後与运营公司咨询。
- 合同期间中无法退住。

□费用・退住时结算

- 本宿舍指南适用于长期留学。如为短期留学，请参阅相关材料。
- 初始费用必须支付给学校。更新后的费用请向运营公司付款。

□取消・退款政策

- 不管是什么原因，宿舍费不予退还。

	入住前取消	入住后取消
宿舍费	无退款	无退款
租金	提前在入居2个月前提出取消时、有部分退款	3个月前提出解约有退款
清洁费 燃气电费 维修准备金保险费 被褥一套 火险费 事务手续费	提前在入居2个月前提出取消时、有部分退款	无退款

□Regarding Contracts

- Shin-a palace is dormitory operated by Inbound Japan Pvt. Ltd.
- Contracts term is 6 months. Please inquire with the management company after entering the dormitory about renewal and the length of the contract after renewal.
- During the contract period, you are not allowed to leave the dormitory.

□Fees / Payment at the time of leaving the dormitory

- This dormitory guide is for long-term students. If you are enrolling on a short-term plan, please see the separate sheet.
- Please pay the initial fee to the school. Please pay the renewal fee directly to the management company.

□Cancellation / refund policy

- Regardless of the reason, the entry fee will not be refunded.

	Cancellation before entering dormitory	Cancellation after entering dormitory
Entry fee	No refunds	No refunds
Rent fees	Partial refundable upon cancellation notice at least 2 months prior to move-in.	Refundable from the third month of cancellation notice.
Clearing expense Utilities cost Savings-type insurance cost for repairing of building Cost of a futon Fire Insurance Procedure fee	Partial refundable upon cancellation notice at least 2 months prior to move-in.	No refunds

东京校
TOKYO船堀公寓
Funabori Apartment

东京都江戸川区船堀7-8-3 / 7-8-3 Funabori, Edogawa-ku, Tokyo

□距离学校/ to School

38

分 / min

10



12



2



14



交通费 Transportation expenses : ¥ 9,010/month

□Map



Google Maps



男性宿舍 Dormitory for Male

39 m²4人使用 /
Shared by 4 people

租金1个月 / Monthly rent cost

23,000 日元 / yen



□房间设施/ Room Facilities

厨房 (燃气)	Kitchen(Propane gas)
厕所	Toilet
淋浴	Shower room
洗衣机	Laundry machine
空调	Air conditioner
热水器	Water heater
收据	Storage space
照明设备	Lighting fixture
双层床	Bunk beds
床垫	Bed mattress
窗帘	Curtains
桌椅	Desks and Chairs
冰箱	Refrigerator
微波炉	Microwave oven
电饭煲	Rice cooker

□公共设施/ Shared Facilities

邮箱	Mailbox
专用垃圾存放区	Private garbage disposal area

□每月开支/ Monthly cost

※价格如有变更, 恕不另行通知。
Rates are subject to change without notice.

	4人使用 Shared by 4
租金 Rent	¥ 23,000
燃气电费·维修准备金保险费 Utilities cost / Savings-type insurance cost for repairing of building	¥ 14,000
合计 Total	¥ 37,000

□入住费用/ Initial Payment

宿舍费 Entry fee	¥ 40,000
清洁费 clearing expense	¥ 8,800
租金·燃气电费·维修准备金保险费6个月 6 months rent / Utilities cost / Savings-type insurance cost for repairing of building	¥ 222,000
火险费 Fire insurance	¥ 2,000
被褥一套 A set of futons	¥ 8,800
事务手续费 Procedure fee	¥ 10,000
合计 Total	¥ 291,600

合同・取消・退款政策

Contract / cancellation / refund policy

船堀公寓 Funabori Apartment

介绍宿舍 Tie-up Dormitory

租赁合同将在学生和每个宿舍的管理公司之间签署。
详情请参阅合同书。
A lease agreement is signed by the student and the management company of each dormitory.
For details of the contract, please refer to the contract.

□关于合同

- 船堀公寓为株式会社インバウンド・ジャパン运营的宿舍。
- 合同期间为6个月。有关更新及更新后的合同期间，请在搬进宿舍後与运营公司咨询。
- 合同期间中无法退住。

□费用・退住时结算

- 本宿舍指南适用于长期留学。如为短期留学，请参阅相关材料。
- 初始费用必须支付给学校。更新后的费用请向运营公司付款。

□关于房间

- 此套房为4人定员房，一个房间将由2位入住者共同使用。
空调仅安装在其中一个房间内。
- 在盛夏或严冬等需要调节温度的时期，请通过打开与隔壁房间之间的门来进行温度调节，敬请谅解。

□取消・退款政策

- 不管是什么原因，宿舍费不予退还。

	支付费用后，在搬进宿舍之前	搬进宿舍之后
宿舍费	无退款	无退款
租金	提前在入居2个月前提出取消时、有部分退款	3个月前提出解約有退款
清洁费 燃气电费 维修准备金保险费 火险费 被褥一套 事务手续费	提前在入居2个月前提出取消时、有部分退款	无退款

□Regarding Contracts

- Funabori Apartment is a dormitory operated by Inbound Japan Pvt. Ltd.
- Contracts term is 6 months. Please inquire with the management company after entering the dormitory about renewal and the length of the contract after renewal.
- During the contract period, you are not allowed to leave the dormitory.

□Fees / Payment at the time of leaving the dormitory

- This dormitory guide is for long-term students. If you are enrolling on a short-term plan, please see the separate sheet.
- Please pay the initial fee to the school. Please pay the renewal fee directly to the management company.

□About the room

- This room can accommodate four people, so two people will share one room.
- Air conditioning is installed in only one of the rooms. To adjust the temperature in midsummer or midwinter, you will need to open the door between the rooms. Thank you for your understanding.

□Cancellation / refund policy

- Regardless of the reason, the entry fee will not be refunded.

	After payment of fees and until entering the dormitory	After entering the dormitory
Entry fee	No refunds	No refunds
Rent fees	Partial refundable upon cancellation notice at least 2 months prior to move-in.	Refundable from the third month of cancellation notice.
Clearing expense Utilities cost Savings-type insurance cost for repairing of building Fire Insurance Cost of a futon Procedure fee	Partial refundable upon cancellation notice at least 2 months prior to move-in.	No refunds

东京校
TOKYO福日之家
FUKUNICHI Heim

东京都葛饰区新小岩2-38-4 / 2-38-4 Shinkoiwa, Katsushika-ku, Tokyo

□距离学校/ to School

22

分 / min

8



+

10



4



交通费 Transportation expenses : ¥ 5,620/month

□Map



Google Maps

男女共用
Dormitory for Unisex

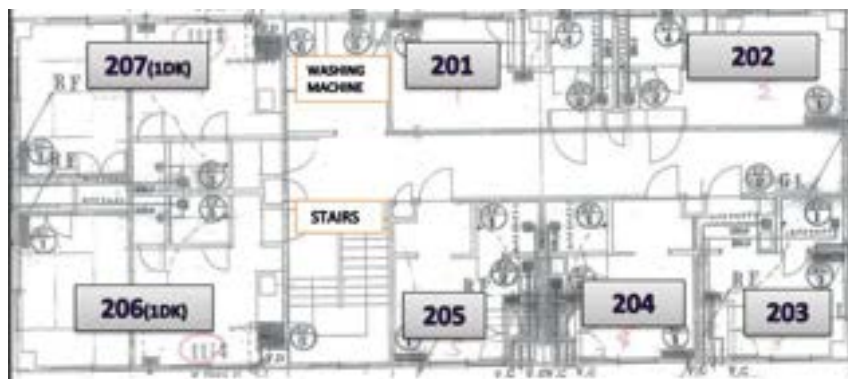
13.3㎡



1人使用 / Single

租金1个月 / Monthly rent cost

74,000 ~ 日元 / yen

※价格如有变更，恕不另行通知。
Rates are subject to change without notice.

□房间设施/ Room Facilities

厨房	Kitchen
厕所	Toilet
淋浴	Shower room
洗面台	Sink
空调	Air conditioner
冰箱	Refrigerator
双层床	Loft beds
壁橱	Closet
书桌	Desk
椅子	Chair

□公共设施/ Shared Facilities

洗衣机	Laundry machine
-----	-----------------

□每月开支/ Monthly cost

	1人使用 Single
租金 Rent	¥ 71,000 ~
共益费 Common service fee	¥ 16,000
合计 Total	¥ 87,000 ~

□入住费用/ Initial Payment

宿舍费 Entry fee	¥ 16,500
保证金 Deposit	¥ 30,000
清洁费 clearing expense	¥ 27,500
租金6个月 6 months rent	¥ 426,000 ~
共益费6个月 6 months Common service	¥ 96,000
家财险 home contents insurance	¥ 7,000
被褥一套 A set of futons	¥ 11,000
事务手续费 Procedure fee	¥ 10,000
合计 Total	¥ 624,000 ~

合同・取消・退款政策
Contract / cancellation / refund policy

介绍宿舍 Tie-up Dormitory

租赁合同将在学生和每个宿舍的管理公司之间签署。
详情请参阅合同书。
A lease agreement is signed by the student and the management company of each dormitory.
For details of the contract, please refer to the contract.

□关于合同

- 福日之家为株式会社BeGoodJapan运营的宿舍。
- 合同期间为6个月。有关更新及更新后的合同期间，请在搬进宿舍後与运营公司咨询。
- 合同期间中无法退住。
- 您的房间号码将在您入住前一个月确认。

□费用・退住时结算

- 本宿舍指南适用于长期留学。如为短期留学，请参阅相关材料。
- 初始费用必须支付给学校。更新后的费用请向运营公司付款。
- 共益费中包含了水费燃气电费和网费。
- 退宿舍时，如果房间没有问题，退还保证金。
- 如果超过6个月继续入住，需另行支付保证金，敬请谅解。
- ※追加保证金是指一个月房租金额减去已支付的30,000日元后的差额。
- 关于预订BeGoodJapan的宿舍“福日之家”，根据房间的空房情况，可能会产生最多3,000日元（一个月）的差额费用，敬请谅解。

□取消・退款政策

- 不管是什么原因，宿舍费不予退还。

	入住前取消	入住后取消
宿舍费	无退款	无退款
保证金	100%退款	※前項参照
清洁费 租金 共益费 家居财物保险费 被褥一套 事务手续费	100%退款	无退款

□Regarding Contracts

- FUKUNICHI Heim is dormitory operated by BeGood Japan Co., Ltd.
- Each contract term is 6 months. Please inquire with the management company after entering the dormitory about renewal and the length of the contract after renewal.
- During the contract period, you are not allowed to leave the dormitory.
- The room number will be confirmed one month before moving in.

□Fees / Payment at the time of leaving the dormitory

- This dormitory guide is for long-term students. If you are enrolling on a short-term plan, please see the separate sheet.
- Please pay the initial fee to the school. Please pay the renewal fee directly to the management company.
- Utilities and internet fees are included in the Common service fee.
- When leaving of FUKUNICHI Heim, if there are no problems with the room, the deposit will be refunded.
- Please note that if you intend to continue residing for more than six months, you will be required to pay an additional deposit.
- *The additional deposit is the first month's rent minus the 30,000 yen already paid.
- Please note that when reserving the BeGoodJapan dormitory "Fukunichi Heim", there may be a maximum 3,000 Yen difference in fees (1 month's rent) depending on the availability of rooms.

□Cancellation / refund policy

- Regardless of the reason, the entry fee will not be refunded.

	Cancellation before entering dormitory	Cancellation after entering dormitory
Entry fee	No refunds	No refunds
Deposit	100% refundable	※see preceding paragraph
Clearing expense Rent fees Common service fee Home contents insurance Cost of a futon Procedure fee	100% refundable	No refunds