



長期留學生用 學生宿舍介紹

# ***Dormitory Information***

*For Long-term students*

*April 2026 ~ March 2027*



(2025年12月版)



長野校 NAGANO Campus

長野縣上田市大手2-3-1 YCC第2ビル  
2-3-1 YCC NO.2 bldg., Ote, Ueda, Nagano, Japan



東京校 TOKYO Campus

東京都墨田区兩國2-10-5 TOC両国ビル  
2-10-5 Ryogoku, TOC bldg., Sumida, Tokyo, Japan



# MANABI 外語学院

MANABI Japanese Language Institute

## 長野校宿舍 Nagano Dormitories

- 能力公寓 Ability Mansion
- 希望公寓 Hope Mansion
- 和平公寓 Peace Mansion
- 易北閣 Elbe Court

## 東京校宿舍 Tokyo Dormitories

- DK新小岩之家 DK House Shinkoiwa
- 福日之家 FUKUNICHI Heim
- 入境日本有限公司 Inbound Japan Pvt. Ltd.



長野校 NAGANO Campus

長野縣上田市大手2-3-1 YCC第2ビル  
2-3-1 YCC NO.2 bldg., Ote, Ueda, Nagano, Japan



東京校 TOKYO Campus

東京都墨田區兩國2-10-5 TOC両国ビル  
2-10-5 Ryogoku, TOC bldg., Sumida, Tokyo, Japan

長野校  
NAGANO

# 能力公寓 Ability Mansion

長野縣上田市材木町2-9-13 / 2-9-13 Zaimokucho, Ueda, Nagano

□距離學校 / to School

9分 min. / 18分 min.

交通費 Transportation expenses : ¥ 0

□Map



Google Maps



1人使用 / Single

8㎡

租金1個月 (含燃氣費、水費)  
Monthly rent cost (Gas and water charges included)

**36,000** 日元 / yen



2人使用 /  
Shard by 2 people

8㎡

租金1個月 (含燃氣費、水費)  
Monthly rent cost (Gas and water charges included)

**23,000** 日元 / yen



能力公寓是一個合租屋。請注意，廚房、淋浴間和衛生間等許多設施均為共用設施。  
Ability Mansion is a shared house. Please note that many facilities, such as the kitchen, shower room, and toilets, are shared.



觀看視頻  
Check it out in the video !



YouTube

## □房間設施 / Room Facilities

空調 Air conditioner  
冰箱 Refrigerator  
雙層床 Bunk beds  
儲物箱 Storage box  
書桌 Desk  
椅子 Chair

## □公共設施 / Shard Facilities

廚房 Kitchen  
廁所 Toilet  
淋浴 Shower room  
洗面台 Sinks  
食堂 Dining  
微波爐 Microwave oven  
洗衣機 Washing machine  
吸塵器 Vacuum cleaner

## □每月開支 / Monthly cost

※價格如有變更，恕不另行通知。  
Rates are subject to change without notice.

	1人使用 Single	2人使用 Shared by 2
租金 Rent (包括燃氣和水費) (Gas and water charges included)	¥ 36,000	¥ 23,000
電費 Electric bill	¥ 5,000	¥ 5,000
合計 Total	¥ 41,000	¥ 28,000

## □入住費用 / Initial Payment

宿舍費 Entry fee	¥ 30,000	¥ 30,000
保證金 Deposit	¥ 40,000	¥ 40,000
租金6個月 6 months rent	¥ 216,000	¥ 138,000
電費6個月 6 months Electric bill	¥ 30,000	¥ 30,000
被褥一套 A set of futons	¥ 13,200	¥ 13,200
合計 Total	¥ 329,200	¥ 251,200



長野校  
NAGANO

# 希望公寓 Hope Mansion

長野縣上田市中央東2-20 / 2-20 Chuou Higashi, Ueda, Nagano

□距離學校/ to School

9分 / 18分

交通費 Transportation expenses : ¥ 0

□Map



Google Maps

20㎡



1人使用 / Single

租金1個月 (含燃氣費、水費)  
Monthly rent cost (Gas and water charges included)

**49,000** 日元 / yen

20㎡



2人使用 /  
Shared by 2 people

租金1個月 (含燃氣費、水費)  
Monthly rent cost (Gas and water charges included)

**31,000** 日元 / yen



觀看視頻

Check it out in the video !



YouTube

## □房間設施/ Room Facilities

廚房	Kitchen
廁所	Toilet
淋浴	Shower room
壁櫥	Closet
空調	Air conditioner
冰箱	Refrigerator
微波爐	Microwave oven
床	bed
書桌	Desk
椅子	Chair

## □公共設施/ Shared Facilities

洗衣機	Laundry machine
吸塵器	Vacuum cleaner

## □每月開支/ Monthly cost

※價格如有變更，恕不另行通知。

Rates are subject to change without notice.

	1人使用 Single	2人使用 Shared by 2
租金 Rent (含燃氣費、水費) (Gas and water charges included)	¥ 49,000	¥ 31,000
電費 Electric bill	¥ 5,000	¥ 5,000
合計 Total	<b>¥ 54,000</b>	<b>¥ 36,000</b>

## □入住費用/ Initial Payment



宿舍費 Entry fee	¥ 30,000	¥ 30,000
保證金 Deposit	¥ 40,000	¥ 40,000
租金6個月 6 months rent	¥ 294,000	¥ 186,000
電費6個月 6 months Electric bill	¥ 30,000	¥ 30,000
被褥一套 A set of futons	¥ 13,200	¥ 13,200
合計 Total	<b>¥ 407,200</b>	<b>¥ 299,200</b>

長野校  
NAGANO

# 和平公寓 Peace Mansion

長野縣上田市材木町2-9-12 / 2-9-12 Zaimokucho, Ueda, Nagano


□距離學校/ to School

9  / 18  分 / min

交通費 Transportation expenses : ¥ 0

□Map



 Google Maps

20㎡



1人使用 / Single

租金1個月 (含燃氣費、水費)  
Monthly rent cost (Gas and water charges included)

**61,000** 日元 / yen

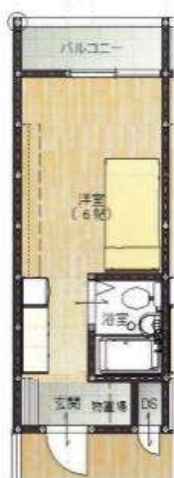
20㎡



2人使用 /  
Shared by 2 people

租金1個月 (含燃氣費、水費)  
Monthly rent cost (Gas and water charges included)

**39,000** 日元 / yen



觀看視頻

Check it out in the video !



 YouTube

## □房間設施/ Room Facilities

廚房	Kitchen
廁所	Toilet
淋浴	Shower room
空調	Air conditioner
冰箱	Refrigerator
微波爐	Microwave oven
洗衣機	Laundry machine
雙層床	Bunk beds
儲物箱	Storage box
書桌	Desk
椅子	Chair

## □每月開支/ Monthly cost

※價格如有變更，恕不另行通知。  
Rates are subject to change without notice.

	1人使用 Single	2人使用 Shared by 2
租金 Rent (含燃氣費、水費) (Gas and water charges included)	¥ 61,000	¥ 39,000
電費 Electric bill	¥ 5,000	¥ 5,000
合計 Total	<b>¥ 66,000</b>	<b>¥ 44,000</b>

## □入住費用/ Initial Payment

宿舍費 Entry fee	¥ 30,000	¥ 30,000
保證金 Deposit	¥ 40,000	¥ 40,000
租金6個月 6 months rent	¥ 366,000	¥ 234,000
電費6個月 6 months Electric bill	¥ 30,000	¥ 30,000
被褥一套 A set of futons	¥ 13,200	¥ 13,200
合計 Total	<b>¥ 479,200</b>	<b>¥ 347,200</b>





長野校  
NAGANO

# 易北閣 Elbe Court

長野縣上田市材木町1-1-20 / 1-1-20 Zaimokucho, Ueda, Nagano

□距離學校/ to School

8  / 15  分 / min

交通費 Transportation expenses : ¥ 0

□Map



Google Maps

20㎡

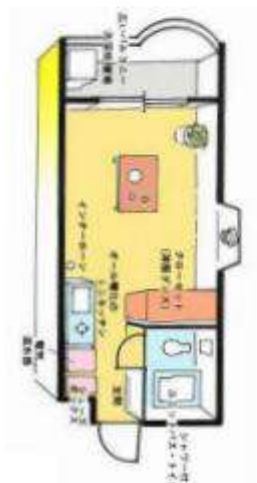


1人使用 / Single

租金1個月 (含燃氣費、水費)

Monthly rent cost (Gas and water charges included)

**57,000** 日元 / yen



## □房間設施/ Room Facilities

廚房	Kitchen
廁所	Toilet
淋浴	Shower room
空調	Air conditioner
冰箱	Refrigerator
微波爐	Microwave oven
洗衣機	Laundry machine
吸塵器	Vacuum cleaner
床	Bed
壁櫥	Closet
書桌	Desk
椅子	Chair
自動鎖櫃	Auto lock

## □每月開支/ Monthly cost

※價格如有變更，恕不另行通知。

Rates are subject to change without notice.

	1人使用 Single
租金 Rent (含燃氣費、水費) (Gas and water charges included)	¥ 57,000
電費 Electric bill	¥ 5,000
合計 Total	¥ 62,000

## □入住費用/ Initial Payment

宿舍費 Entry fee	¥ 30,000
保證金 Deposit	¥ 40,000
租金6個月 6 months rent	¥ 342,000
電費6個月 6 months Electric bill	¥ 30,000
被褥一套 A set of futons	¥ 13,200
合計 Total	¥ 455,200

# 合同・取消・退款規定

## Contract / cancellation / refund policy

長野校  
NAGANO

### □關於合同期間・搬進宿舍

- 合同期間為六個月。更新後為每三個月一次簽約。
- 合同期間無法退住。
- 需在合約到期前兩個月提出退住或者續住的申請。
- 合約開始月份為入學學期的開始月份（4月、7月、10月、1月）。
- 請在『指定搬進宿舍日』搬進宿舍。該日期之前不得搬進宿舍。
- 僅在房間準備好的情況下，可以在合同開始月的前一個月搬進宿舍。在這種情況下，房租按天計算，電費按每天300日元計算。

### □費用・退住時結算

- 本宿舍指南適用於長期留學。如為短期留學，請參閱相關材料。
- 如果電費每月超過5,000日元，請支付超出部分。
- 退宿手續完成後，確認搬出行李，並檢查房間後，將扣除以下費用後返還保證金，或者要求支付以下費用：  
① 退宿費用 20,000日元 ② 電費差額結算 ③ 牆壁、地板以及室內物品有損傷或污漬的修繕費用

### □取消・退款規定

- 無論出於何種原因，宿舍費將不予退款。
- 即使您入境較晚，合同期內的房租仍然生效。

	入住前取消	入住後取消
宿舍費	無退款	無退款
保證金	100% 退款	※前項參照
租金	扣除取消申請次月之前的房租後退款	無退款
電費	100% 退款	退還取消申請次月以後的房租
被褥費	100% 退款	無退款

### □About Contract period / Dormitory entry

- The contract period is 6 months. After renewal, the contract will be renewed every 3 months.
- You cannot leave the dormitory during the contract period.
- Please notify us at least 2 months prior to the expiration date of your contract.
- The contract starts at the beginning of the semester in which you enter the dormitory (April, July, October, or January).
- Please enter the dormitory on the "Designated Entry Date". No one will be allowed to move in before this date.
- However, You can enter the dormitory in the previous month of the contract start month only if a room is available. In this case, rent will be calculated on a daily basis. Electricity bill will be calculated as 300 yen per day.

### □About Fees / Leaving the dormitory

- This dormitory guide is for long-term students. If you are enrolling on a short-term plan, please refer the separate sheet.
- If electricity bill exceeds 5,000 yen per month, please pay the excess amount.
- The security deposit will be refunded or charged after the move-out procedure, after confirming the removal of luggage and checking the room, and after deducting the following expenses.  
(1) Cleaning and maintenance :20,000 (2) Electricity bill reimbursement (3) Repair expenses in case of damage or stains on walls, floors, and fixtures in the room

### □Cancellation / refund policy

- Regardless of the reason, the dormitory fee will not be refunded.
- Rent described in contract will be charged even if your arrival is delayed in Japan.

	Cancellation before entering dormitory	Cancellation after entering dormitory
Entry fee	No refunds	No refunds
Deposit	100% refunds	*See previous section.
Rent	Amount will be refunded from the second month of cancellation of the request	No refunds
Electricity Fee	100% refundable	Amount from next month will be refunded after the cancellation request
cost of a futon	100% refundable	No refunds

# 介紹宿舍 Tie-up Dormitory

第一恆產株式會社運營的宿舍介紹  
Introducing the dormitory operated by Daiichi-Kousan Co.,Ltd.

東京校  
TOKYO

## DK新小岩之家 DK House Shinkoiwa

東京都葛飾區新小岩4-4-5 / 4-4-5 Shinkoiwa, Katsushika-ku, Tokyo

□距離學校/ to School

22

分 / min

8



+

10



+

4



□Map



Google Maps

交通費 Transportation expenses : ¥ 5,270/month



男女共用  
Dormitory for Unisex



1人使用 / Single

租金1個月 (含燃氣費、水費)  
Monthly rent & Utility fees

55,000 日元 / yen

8㎡



□房間設施/ Room Facilities

空調	Air conditioner
冰箱	Refrigerator
2層床	( Bunk ) beds
書桌	Desk
椅子	Chair

□公共設施/ Shared Facilities

廚房	Kitchen
洗手間	Toilet
淋浴間	Shower room
洗手盆	Sink
自助式洗衣機	Laundry machine
(付費)	(prepaid)
自助式烘幹機	Dryer
(付費)	(prepaid)
餐具	Cutleries
微波爐	Microwaves
電腦 & 打印機	PC & printer

□每月開支/ Monthly cost

※價格如有變更，恕不另行通知。  
Rates are subject to change without notice.

	1人使用 Single
租金・水電燃氣費 Rent & Utility fees	¥ 55,000
共益費 Common service fee	¥ 15,000
合計 Total	¥ 70,000

□入住費用/ Initial Payment

入宿費 Entry fee	¥ 30,000
保證金 Deposit	¥ 20,000
租金・水電燃氣費3個月 3 months rent & utility fees	¥ 165,000
共益費3個月 3 months Common service fee	¥ 45,000
被鋪租賃3個月 3 months A set of futons rent fee	¥ 10,500
事務手續費 Procedure fee	¥ 10,000
合計 Total	¥ 280,500



# 合約取消・退款規定

## Contract / cancellation / refund policy

### 介紹宿舍 Tie-up Dormitory

租賃合約將在學生和每個宿舍的管理公司之間簽署。  
詳情請參閱合約書。  
A lease agreement is signed by the student and the management company of each dormitory.  
For details of the contract, please refer to the contract.

#### 關於合約

- DK新小岩之家是第一恆產株式會社運營的宿舍。
- 合約期間為3個月。有關更新及更新後的合約期間，請在搬進宿舍後與運營公司諮詢。
- 合約期間中無法退住。

#### 費用・退住時結算

- 本宿舍指南適用於長期留學。如為短期留學，請參閱相關材料。
- 初始費用必須支付給學校。更新後的費用請向運營公司付款。
- 租金中包含了ら燃氣費・以及電費每月100kw。如果超過此金額，您將需要支付實際費用。
- 退宿時，如果房間沒有問題，從保證金中扣除修復費用後退還。

#### 取消・退款規定

- 不管是什麼原因，宿舍費不予退還。

	入住前取消	入住後取消
宿舍費	無退款	無退款
保證金	100%退款	※前項參照
租金・水費電費以及燃氣費 共益費	100%退款	無退款（*1 例外）
被鋪租賃	無退款	無退款
事務手續費	100%退款	無退款

※僅在搬進宿舍的当月取消的情況下、有特殊的退款規定。 請聯系了解詳情。

#### Regarding Contracts

- DK House Shinkoiwa is a dormitory operated by Daiichi Kosan Co.
- The contract term is 3 months. Please inquire with the management company after entering the dormitory about renewal and the length of the contract after renewal
- During the contract period, you are not allowed to leave the dormitory.

#### Fees / Payment at the time of leaving the dormitory

- This dormitory guide is for long-term students. If you are enrolling on a short-term plan, please see the separate sheet.
- Please pay the initial fee to the school. Please pay the renewal fee directly to the management company.
- Utilities are included in rent up to 100kw per month. If the amount exceeds 100kw per month, the actual cost will be charged.
- If there are no problems with the room when you leave the dormitory, the deposit will be refunded minus the cost of restoring the room to its original condition.

#### Cancellation / refund policy

- Regardless of the reason, the dormitory fee will not be refunded.

	Cancellation before entering dormitory	Cancellation after entering dormitory
Entry fee	No refunds	No refunds
Deposit	100% refundable	※See previous section
Rent and utilities Shared expenses	100% refundable	No refunds (*1 exceptions apply)
Futon Rental	No refunds	No refunds
Services Charge	100% refundable	No refunds

※There is a special refund policy only if the cancellation is requested within the month of entering the dormitory. Please contact us for details.

東京校  
TOKYO

# 福日之家 FUKUNICHI Heim

東京都葛飾區新小岩2-38-4 / 2-38-4 Shinkoiwa, Katsushika-ku, Tokyo

□距離學校/ to School

22

分 / min

8



+

10



4



交通費 Transportation expenses : ¥ 5,620/month

□Map



Google Maps



男女共用  
Dormitory for Unisex

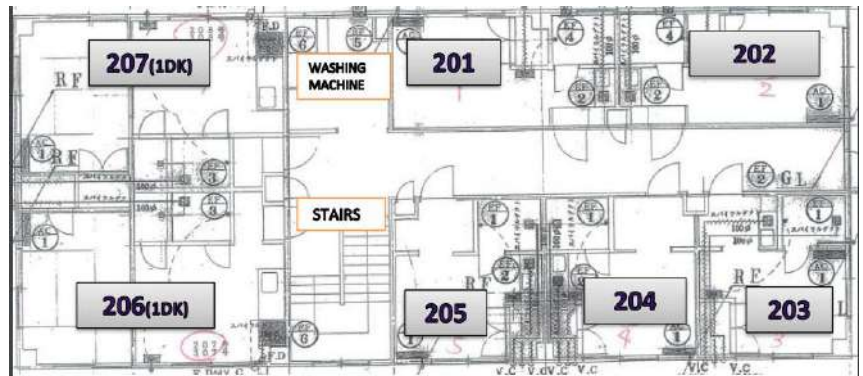
13.3㎡



1人使用 / Single

租金1個月 / Monthly rent cost

74,000 ~ 日元 / yen



※價格如有變更，恕不另行通知。  
Rates are subject to change without notice.

□每月開支/ Monthly cost

□房間設施/ Room Facilities

廚房	Kitchen
廁所	Toilet
淋浴	Shower room
洗面台	Sink
空調	Air conditioner
冰箱	Refrigerator
雙層床	Loft beds
壁櫥	Closet
書桌	Desk
椅子	Chair

□公共設施/ Shared Facilities

洗衣機	Laundry machine
-----	-----------------

□入住費用/ Initial Payment

1人使用 Single	
租金 Rent	¥ 74,000 ~
共益費 Common service fee	¥ 16,000
合計 Total	¥ 90,000 ~

入宿費 Entry fee	¥ 16,500
保證金 Deposit	¥ 30,000
清潔費 clearing expense	¥ 27,500
租金6個月 6 months rent	¥ 444,000 ~
共益費6個月 6 months Common service	¥ 96,000
家財保險 home contents insurance	¥ 7,000
被褥一套 A set of futons	¥ 11,000
事務手續費 Procedure fee	¥ 10,000
合計 Total	¥ 642,000 ~

合同・取消・退款規定  
Contract / cancellation / refund policy

介紹宿舍 Tie-up Dormitory

租賃合同將在學生和每個宿舍的管理公司之間簽署。  
詳情請參閱合同書。  
A lease agreement is signed by the student and the management company of each dormitory.  
For details of the contract, please refer to the contract.

關於合同

- 福日之家為株式會社BeGoodJapan運營的宿舍。
- 合同期間為6個月。有關更新及更新後的合同期間，請在搬進宿舍後與運營公司諮詢。
- 合同期間中無法退住。
- 您的房間號碼將在您入住前一個月確認。

費用・退住時結算

- 本宿舍指南適用於長期留學。如為短期留學，請參閱相關材料。
- 初始費用必須支付給學校。更新後的費用請向運營公司付款。
- 共益費中包含了水費燃氣電費和網費。
- 退宿舍時，如果房間沒有問題，退還保證金。
- 如果超過6個月繼續入住，需另行支付保證金，敬請諒解。
- ※追加保證金是指一個月房租金額減去已支付的30,000日元後的差額。
- 關於預訂棟BeGoodJapan的宿舍“福日之家”，根據房間的空房情況，可能會產生最多3,000日元（一個月）的差額費用，敬請諒解。

取消・退款政策

- 什麼原因，宿舍費不予退還。

	入住後取消	入住後取消
宿舍費	無退款	無退款
保證金	100%退款	※前項參照
清潔費 租金 共益費 家居財物保險費 被褥一套 事務手續費	100%退款	無退款

Regarding Contracts

- FUKUNICHI Heim is dormitory operated by BeGood Japan Co., Ltd.
- Each contract term is 6 months. Please inquire with the management company after entering the dormitory about renewal and the length of the contract after renewal.
- During the contract period, you are not allowed to leave the dormitory.
- The room number will be confirmed one month before moving in.

Fees / Payment at the time of leaving the dormitory

- This dormitory guide is for long-term students. If you are enrolling on a short-term plan, please see the separate sheet.
- Please pay the initial fee to the school. Please pay the renewal fee directly to the management company.
- Utilities and internet fees are included in the Common service fee.
- When leaving of FUKUNICHI Heim, if there are no problems with the room, the deposit will be refunded.
- Please note that if you intend to continue residing for more than six months, you will be required to pay an additional deposit.  
\*The additional deposit is the first month's rent minus the 30,000 yen already paid.
- Please note that when reserving the BeGoodJapan dormitory "Fukunichi Heim", there may be a maximum 3,000 Yen difference in fees (1 month's rent) depending on the availability of rooms.

Cancellation / refund policy

- Regardless of the reason, the entry fee will not be refunded.

	Cancellation before entering dormitory	Cancellation after entering dormitory
Entry fee	No refunds	No refunds
Deposit	100% refundable	※see preceding paragraph
Clearing expense Rent fees Common service fee Home contents insurance Cost of a futon Procedure fee	100% refundable	No refunds



東京校  
TOKYO

入境日本有限公司  
Inbound Japan Pvt. Ltd.



雙人間  
Shared by 2 people

~37,000  
日元 / yen

□到學校需要花費的時間/ Distance from School



最多需要60分鐘/Maximum 60 minutes

移動時間和交通費由宿捨的地理條件有所不同。  
Travel time and transportation costs vary depending on the location.



外觀 Outside



廚房 Kitchen



房間 Room



洗衣間 Laundry



廁所・浴室  
Shower room



自習室（共享空間）  
Study Room (Common Area)



家電 Home appliances

※照片僅供參考，根據宿捨有所不同。  
The photo is for illustrative purposes only.  
There may be differences depending on the dormitory.

※房間的大小以及款式由所選擇的宿捨有所不同。  
Room types and sizes vary depending on the dormitory.  
※房租根據入住時間以及地段有所不同。  
Prices may vary depending on the move-in period and location of your stay.

□室內設備 / Room Facilities

廚房 Kitchen  
廁所 Toilet  
浴室 Shower room  
洗面台 Wash basin  
空調 Air conditioner  
冰箱 Refrigerator  
雙層床 Bunk beds  
微波爐 Microwave oven  
桌子和椅子 Desk and Chair

□共享設備 / Shared Facilities

洗衣機 Laundry machine  
乾燥機 Dryer  
自習室 Study room

□每個月的開支 / Monthly cost

	1人使用 Single
房租 Rent	~¥ 37,000
水電煤/維修準備保險金 Utilities cost / Savings-type insurance cost for repairing of building	¥ 14,000
合計 Total	~¥ 51,000

※價格如有變更，恕不另行通知。  
Rates are subject to change without notice.

□入住費用 / Initial Payment

入宿費 Entry fee	¥ 40,000
清潔費 Clearing expense	¥ 8,800
6個月的水電煤/維修準備保險金 6 months rent / Utilities cost / Savings-type insurance cost for repairing of building	~ ¥ 306,000
火險費 Fire Insurance	¥ 2,000
被褥一套 A set of futons	¥ 8,800
事務手續費 Procedure fee	¥ 10,000
合計 Total	~¥ 375,600

東京校  
TOKYO

入境日本有限公司  
Inbound Japan Pvt. Ltd.



4人間  
Shared by 4 people

~34,000  
日元 / yen

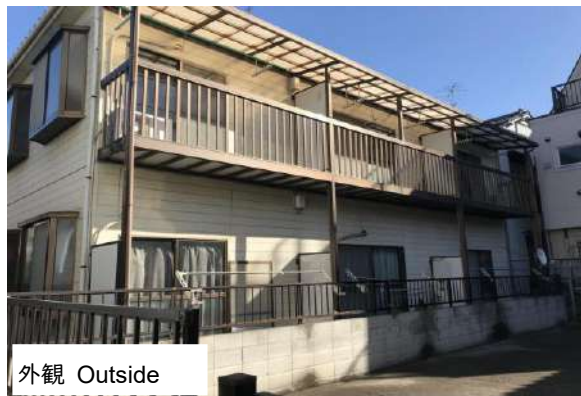
□到學校需要花費的時間/ Distance from School



最多需要60分鐘/Maximum 60 minutes

移動時間和交通費由宿捨的地理條件有所不同。

Travel time and transportation costs vary depending on the location.



外觀 Outside



房間 Room



房間 Room



洗面台  
Wash Basin



浴室  
Shower room



廚房 Kitchen



※照片僅供參考，根據宿捨有所不同。

The photo is for illustrative purposes only.  
There may be differences depending on the dormitory.

※ 房間的大小以及款式由所選擇的宿捨有所不同。  
Room types and sizes vary depending on the dormitory.

※ 房租根據入住時間以及地段有所不同。  
Prices may vary depending on the move-in period and location of your stay.

※價格如有變更，恕不另行通知。

Rates are subject to change without notice.

□室內設備 / Room Facilities

空調 Air conditioner  
雙層床 Bunk beds  
桌子和椅子 Desk and Chair

□共享設備 / Shared Facilities

廚房 Kitchen  
廁所 Toilet  
浴室 Shower room  
洗面台 Wash basin  
洗衣機 Laundry machine  
冰箱 Refrigerator  
微波爐 Microwave oven

□每個月的開支 / Monthly cost

	1人使用 Single
房租 Rent	~¥ 34,000
水電煤/維修準備保險金 Utilities cost / Savings-type insurance cost for repairing of building	¥ 14,000
合計 Total	~¥ 48,000

□入住費用 / Initial Payment

入宿費 Entry fee	¥ 40,000
清潔費 Clearing expense	¥ 8,800
6個月的水電煤/維修準備保險金 6 months rent /Utilities cost / Savings-type insurance cost for repairing of building	~¥ 288,000
火險費 Fire Insurance	¥ 2,000
被褥一套 A set of futons	¥8,800
事務手續費 Procedure fee	¥ 10,000
合計 Total	~¥ 357,600

# 合同・取消・退款規定

## Contract / cancellation / refund policy

入境日本有限公司  
Inbound Japan Pvt. Ltd.

### 合作宿舍 Tie-up Dormitory

租賃合同將在學生和每個宿舍的管理公司之間簽署。  
詳情請參閱合同書。  
A lease agreement is signed by the student and the management company of each dormitory.  
For details of the contract, please refer to the contract.

#### □關於合同

- 該宿舍為入境日本有限公司運營。
- 合同期間為6個月。有關更新及更新後的合同期間，請在搬進宿舍後與運營公司諮詢。
- 合同期間中無法退住。

#### □費用・退住時結算

- 本宿舍指南適用於長期留學。如為短期留學，請參閱相關材料。
- 初始費用必須支付給學校。更新後的費用請向運營公司付款。

#### □取消・退款規定

- 無論什麼原因，宿舍費不予退還。

	入住後取消	入住後取消
宿舍費	無退款	無退款
保證金	入住的至少2個月前通知取消能受到部分退款	通知取消後的第3個月以後能收到還款
清潔費 房租 共益費 家居財物保險費 被褥一套 事務手續費	入住的至少2個月前通知取消能受到部分退款	無退款

#### □Regarding Contracts

- It is a dormitory operated by Inbound Japan Pvt. Ltd.
- Contracts term is 6 months. Please inquire with the management company after entering the dormitory about renewal and the length of the contract after renewal.
- During the contract period, you are not allowed to leave the dormitory.

#### □Fees / Payment at the time of leaving the dormitory

- This dormitory guide is for long-term students. If you are enrolling on a short-term plan, please see the separate sheet.
- Please pay the initial fee to the school. Please pay the renewal fee directly to the management company.

#### □Cancellation / refund policy

- Regardless of the reason, the entry fee will not be refunded.

	Cancellation before entering dormitory	Cancellation after entering dormitory
Entry fee	No refunds	No refunds
Rent fees	Partial refundable upon cancellation notice at least 2 months prior to move-in.	Refundable from the third month of cancellation notice.
Clearing expense Utilities cost Savings-type insurance cost for repairing of building Cost of a futon Fire Insurance Procedure fee	Partial refundable upon cancellation notice at least 2 months prior to move-in.	No refunds